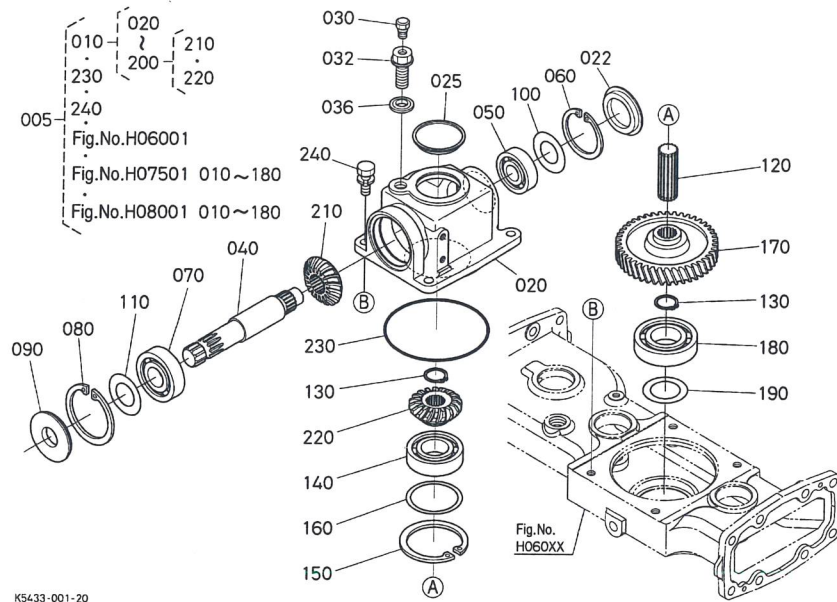


K5453-001-12

≡ Interchangeable NI Not Interchangeable >> New for Old << Old for New

No.	Part No.	Part Name	Qty	FRT[h]	IC	Serial No./PIN	Remarks	Kg
010	K5433-32030	JOINT,UNIVERSAL	1	-				3.74
020	76539-31150	YOKE(QUICK)	1	-				0.55
030	K5371-31130	YOKE,PTO	1	-				0.48
040	K5433-31190	SHAFT,JOINT	1	-				1.54
050	76553-31170	YOKE,SLEEVE	1	-				0.78
060	76539-31180	JOINT,ASSY(CROSS)	2	-				0.2
070	76539-31210	NIPPLE,GREASE	2	-				0.01
080	76539-32120	RING,SNAP	8	-				0.003
090	01123-51035	BOLT,SEMS	1	-				0.025

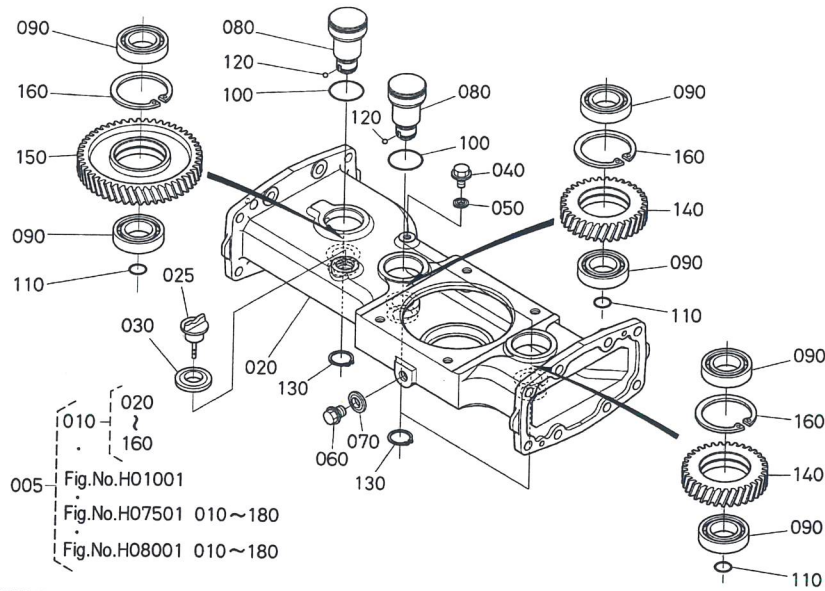


≡ Interchangeable NI Not Interchangeable >> New for Old << Old for New

No.	Part No.	Part Name	Qty	FRT[h]	IC	Serial No./PIN	Remarks	Kg
005	K5433-33007	ASSY,GEARCASE C23-48	1	-				40.0
010	K5433-34102	ASSY CASE,BEVEL GEAR	1	-				6.62
020	K5453-34142	CASE,MOWER BEVEL GEAR	1	-				3.05
022	63313-32270	CAP	1	-				0.03
025	63313-32270	CAP	1	-				0.03
030	K5761-33252	PLUG,BREATHER	1	-				0.006
032	K5453-34150	PLUG,GEARCASE MOWER	1	-				0.04
036	04717-01400	WASHER,SEAL	1	-				0.002
040	K5453-33310	SHAFT,INPUT	1	-				0.72
050	08101-06304	BEARING,BALL	1	-				0.146
060	04611-00520	CIR-CLIP,INTERNAL	1	-				0.009
070	08101-06305	BEARING,BALL	1	-				0.23

≡ Interchangeable NI Not Interchangeable >> New for Old << Old for New

No.	Part No.	Part Name	Qty	FRT[h]	IC	Serial No./PIN	Remarks	Kg
080	04611-00620	CIR-CLIP,INTERNAL	1	-				0.011
090	37500-16470	SEAL,OIL	1	-				0.055
100	K5453-34610	SHIM 2	1	-			0.20mm	0.001
100	66611-14770	SHIM,PTO	1	-			0.30mm	0.001
100	66611-14750	SHIM 1	1	-			0.50mm	0.002
110	66621-15240	SHIM,DIFF GEAR 1	1	-			0.20mm	0.001
110	67211-14990	SHIM,DIFF.GEAR SHAFT	1	-			0.30mm	0.002
110	66621-15250	SHIM,DIFF GEAR 2	1	-			0.50mm	0.003
120	K5453-33510	SHAFT,OUTPUT	1	-				0.176
130	04612-00220	CIR-CLIP,EXTERNAL	2	-				0.001
140	70712-33550	BEARING,BALL	1	-				0.22
150	04611-00650	CIR-CLIP,INTERNAL	1	-				0.011
160	K5453-34640	SHIM,65 T0.2	1	-			0.20mm	0.001
160	K5453-34630	SHIM,65 T0.3	1	-			0.30mm	0.001
160	K5453-34620	SHIM 2	1	-			0.50mm	0.003
170	K5433-33550	GEAR,43 R	1	-			43T	1.2
180	08101-06207	BEARING,BALL	1	-				0.28
190	66616-32220	SHIM	1	-			0.20mm	0.005
190	66613-31650	SHIM	1	-			0.30mm	0.001
190	66616-32210	SHIM	1	-			0.50mm	0.002
200	K5453-33370	KIT GEAR,BEVEL	1	-			17-18T	0.43
210	K5453-33330	GEAR,SPIRAL	1	-			17T	0.186
220	K5453-33350	GEAR,SPIRAL	1	-			18T	0.252
230	04811-11200	RING	1	-				0.001
240	01133-51025	BOLT,SEMS	4	-				0.023

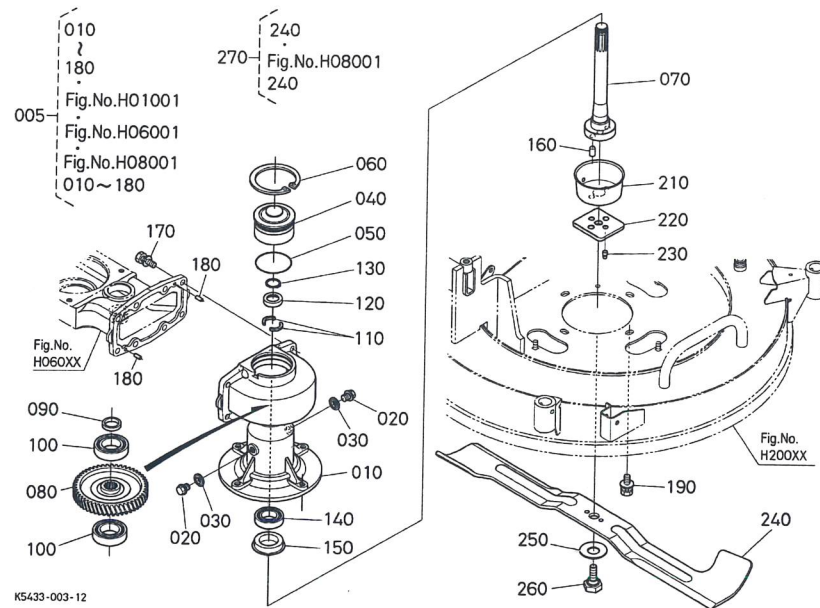


≡ Interchangeable NI Not Interchangeable >> New for Old << Old for New

No.	Part No.	Part Name	Qty	FRT[h]	IC	Serial No./PIN	Remarks	Kg
100	04817-06370	O RING	3	-				0.001
110	04817-00180	O RING	3	-				0.001
120	07715-03205	BALL 5/32	3	-				0.001
130	04612-00220	CIR-CLIP,EXTERNAL	3	-				0.001
140	K5433-33560	GEAR,BEARING 34 L	2	-			34T	0.573
150	K5453-33570	GEAR,BEARING 50 R	1	-			50T	1.683
160	04611-00550	SAFETY RING IN ASSY	3	-				0.01

≡ Interchangeable NI Not Interchangeable >> New for Old << Old for New

No.	Part No.	Part Name	Qty	FRT[h]	IC	Serial No./PIN	Remarks	Kg
005	K5433-33007	ASSY,GEARCASE C23-48	1	-				40.0
010	K5433-33102	ASSY,CASE CENTER	1	-		<=30722		13.13
010	K5433-33103	ASSY,CASE CENTER	1	-	>>	>=30723		13.13
020	K5433-33112	CASE,CENTER	1	-				8.25
025	K5453-34913	GAUGE,OIL	1	-				0.011
030	04717-02000	WASHER,SEAL	1	-				0.004
040	01754-50814	BOLT,FLANGE	1	-				0.012
050	04717-00810	WASHERSEAL	1	-				0.001
060	13901-33750	PLUG,DRAIN	1	-				0.025
070	04717-01200	WASHER,SEAL	1	-				0.002
080	K5453-33392	SHAFT,MOWER BEARING	3	-				0.405
090	08101-06006	BEARING,BALL	6	-				0.117

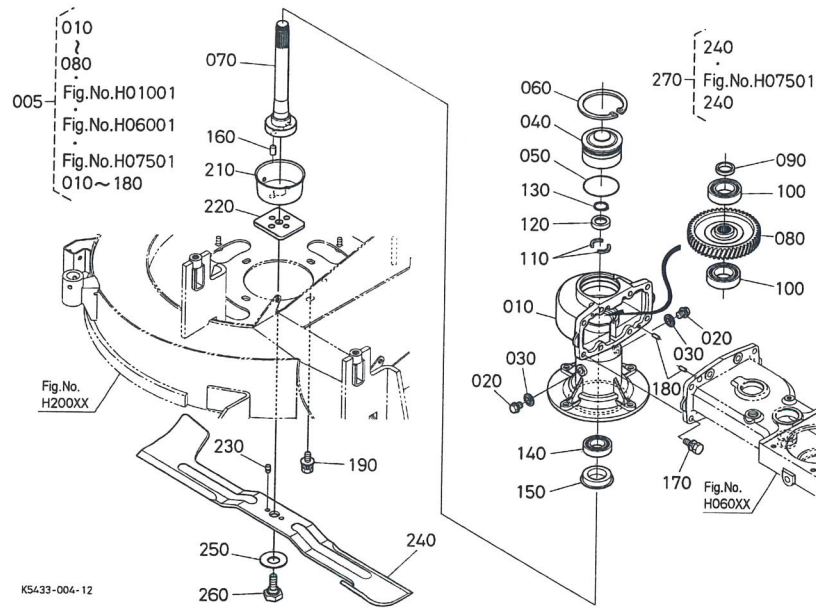


≡ Interchangeable NI Not Interchangeable >> New for Old << Old for New

No.	Part No.	Part Name	Qty	FRT[h]	IC	Serial No./PIN	Remarks	Kg
005	K5433-33007	ASSY,GEARCASE C23-48	1	-				40.0
010	K5453-34112	CASE,SPINDLE	1	-				6.8
020	13901-33750	PLUG,DRAIN	2	-				0.025
030	04717-01200	WASHER,SEAL	2	-				0.002
040	K5453-34180	HOLDER,BEARING	1	-				0.603
050	04810-50650	RING	1	-				0.002
060	04611-00750	CIR-CLIP,INTERNAL	1	-				0.019
070	K5453-34553	SHAFT,BLADE RH	1	-			LH	1.16
080	K5453-33590	GEAR,50 SPLINE R	1	-			50T	1.077
090	K5453-33610	COLLAR	1	-				0.018
100	08101-06007	BEARING,BALL	2	-				0.16
110	67156-14640	COLLAR,STOP	2	-				0.005

≡ Interchangeable NI Not Interchangeable >> New for Old << Old for New

No.	Part No.	Part Name	Qty	FRT[h]	IC	Serial No./PIN	Remarks	Kg
120	K5453-34580	COLLAR,STOPPER	1	-				0.021
130	04612-00220	CIR-CLIP,EXTERNAL	1	-				0.001
140	K5453-34540	BEARING,BALL	1	-				0.094
150	6E040-57340	SEAL,OIL	1	-				0.04
160	05012-01014	PIN,STRAIGHT	2	-				0.009
170	01133-51025	BOLT,SEMS	8	-				0.023
180	05012-00614	PIN,STRAIGHT	2	-				0.004
190	01135-51025	BOLT,W SEMS	4	-				0.023
210	K5453-34310	COVER,DUST	1	-				0.118
220	K5453-34573	HOLDER,PIN	1	-				0.274
230	K5453-34590	PIN,BLADE	2	-				0.006
240	K5433-71840	BLADE,LH	1	-			LH	2.39
250	K5371-34352	SPRING,CORN	1	-				0.03
260	K5453-34373	BOLT(M12X1.25,RH)	1	-				0.1
270	K5433-97520	KIT,BLADE 48	1	-			RH/LH	4.7



≡ Interchangeable NI Not Interchangeable >> New for Old << Old for New

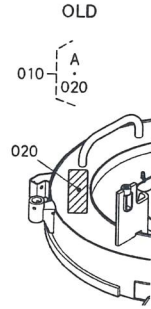
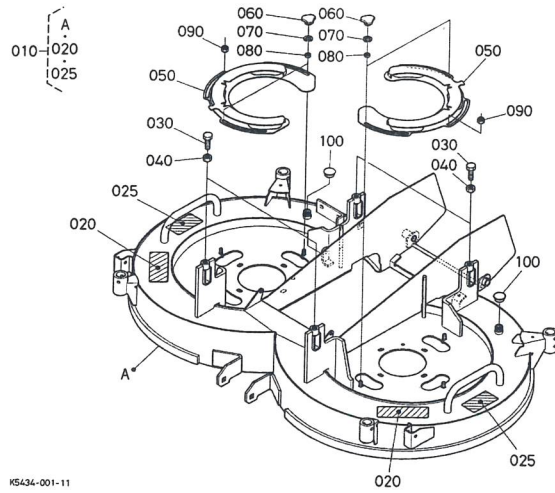
No.	Part No.	Part Name	Qty	FRT[h]	IC	Serial No./PIN	Remarks	Kg
005	K5433-33007	ASSY,GEARCASE C23-48	1	-				40.0
010	K5453-34112	CASE,SPINDLE	1	-				6.8
020	13901-33750	PLUG,DRAIN	2	-				0.025
030	04717-01200	WASHER,SEAL	2	-				0.002
040	K5453-34180	HOLDER,BEARING	1	-				0.603
050	04810-50650	RING	1	-				0.002
060	04611-00750	CIR-CLIP,INTERNAL	1	-				0.019
070	K5453-34563	SHAFT,BLADE LH	1	-			RH	1.165
080	K5453-33580	GEAR,50 SPRINE L	1	-			50T	1.054
090	K5453-33610	COLLAR	1	-				0.018
100	08101-06007	BEARING,BALL	2	-				0.16
110	67156-14640	COLLAR,STOP	2	-				0.005

≡ Interchangeable NI Not Interchangeable >> New for Old << Old for New

No.	Part No.	Part Name	Qty	FRT[h]	IC	Serial No./PIN	Remarks	Kg
120	K5453-34580	COLLAR,STOPPER	1	-				0.021
130	04612-00220	CIR-CLIP,EXTERNAL	1	-				0.001
140	K5453-34540	BEARING,BALL	1	-				0.094
150	6E040-57340	SEAL,OIL	1	-				0.04
160	05012-01014	PIN,STRAIGHT	2	-				0.009
170	01133-51025	BOLT,SEMS	8	-				0.023
180	05012-00614	PIN,STRAIGHT	2	-				0.004
190	01135-51025	BOLT,W SEMS	4	-				0.023
210	K5453-34310	COVER,DUST	1	-				0.118
220	K5453-34573	HOLDER,PIN	1	-				0.274
230	K5453-34590	PIN,BLADE	2	-				0.006
240	K5433-71850	BLADE,RH	1	-			RH	2.4
250	K5371-34352	SPRING,CORN	1	-				0.03
260	K5453-34383	BOLT(M12X1.25,LH)	1	-				0.098
270	K5433-97520	KIT,BLADE 48	1	-			RH/LH	4.7

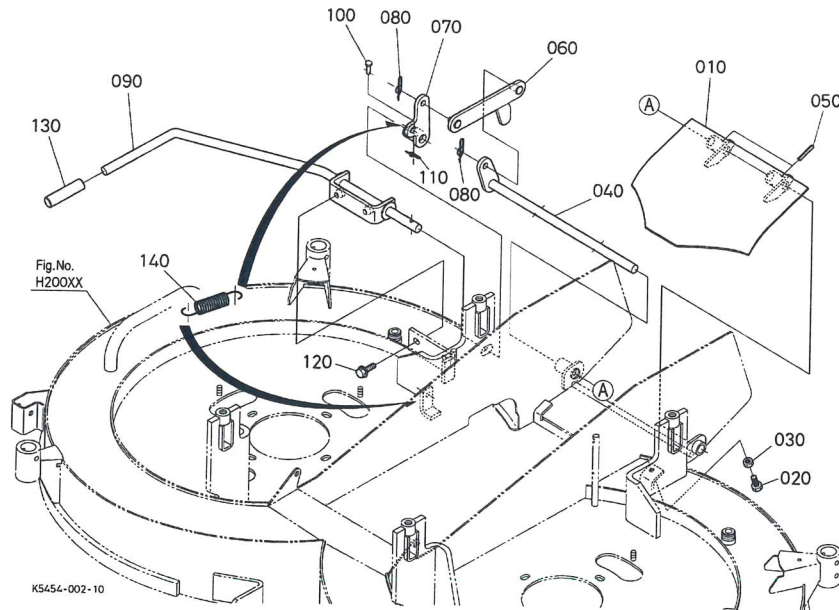
H20001 MOWER DECK ## RCK48-G23-2
RCK48-G23-2 MOWER

Update Date: 2015/08/25
Printing Date: 2022/03/09



≡ Interchangeable NI Not Interchangeable >> New for Old << Old for New

No.	Part No.	Part Name	Qty	FRT[h]	IC	Serial No./PIN	Remarks	Kg
010	K5434-97120	DECK,KIT(MOWER)	1	-		<=50635		0.0
010	K5434-97122	DECK	1	-	>>	>=50636		0.0
020	K5254-73110	LABEL,WARNING	2	-		<=50635		0.005
020	K5644-41790	LABEL(WARNING 2)	2	-	NI	>=50636		0.003
025	K5622-41800	LABEL(WARNING,3)	2	-		>=50636		0.0
030	K5645-41912	BOLT(ADJUSTER)	4	-				0.05
040	02174-50120	HEX.NUT	4	-				0.01
050	K5453-71750	COVER	2	-				0.69
060	02820-00080	NUT,KNOB	4	-				0.02
070	04512-50080	WASHER,SPRING LOCK	4	-				0.002
080	K5453-71760	COLLAR	4	-				0.005
090	02552-50080	NUT,LOCKING	2	-				0.005
100	K5453-71510	CAP,MOWER	2	-				0.006

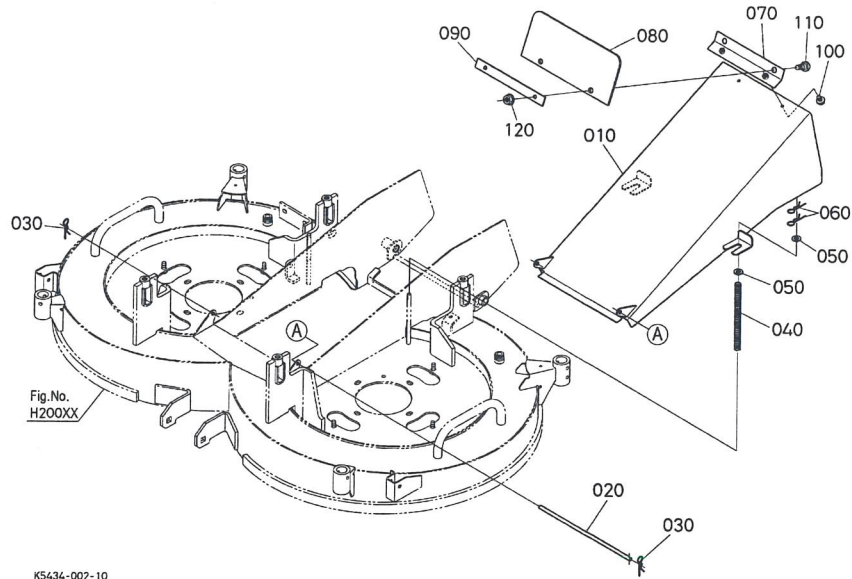


≡ Interchangeable NI Not Interchangeable >> New for Old << Old for New

No.	Part No.	Part Name	Qty	FRT[h]	IC	Serial No./PIN	Remarks	Kg
130	K5410-71310	GRIP, MOWER	1	-				0.009
140	K1310-25322	SPRING(PTO BRAKE)	1	-				0.06

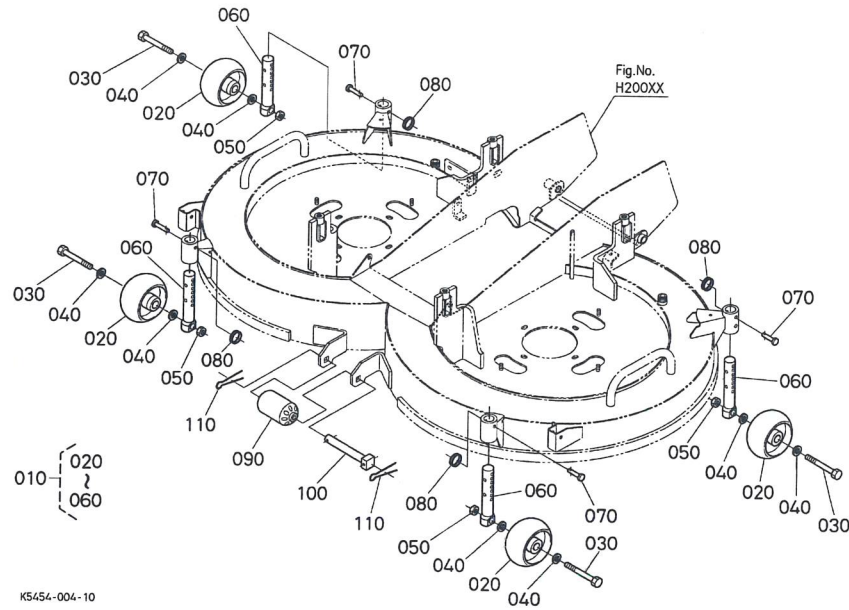
≡ Interchangeable NI Not Interchangeable >> New for Old << Old for New

No.	Part No.	Part Name	Qty	FRT[h]	IC	Serial No./PIN	Remarks	Kg
010	K5454-71122	PLATE(JUMP)	1	-				1.27
020	01153-50820	HEX.BOLT	1	-				0.012
030	02112-50080	HEX.NUT	1	-				0.003
040	K5454-97812	ROD(PLATE JUMP)	1	-				0.489
050	05411-00430	PIN SPRING	2	-				0.002
060	K5454-97924	PLATE(LINK 2)	1	-				0.283
070	K5454-97930	ARM(LINK 3)	1	-				0.168
080	K1211-91132	RUE-RING(COTTER)	2	-				0.01
090	K5454-97940	LEVER,COMP(ROT)	1	-				1.0
100	05122-50630	PIN JOINT	1	-				0.006
110	K1211-91112	RUE RING COTTER	1	-				0.001
120	01754-50825	BOLT,FLANGE	2	-				0.01



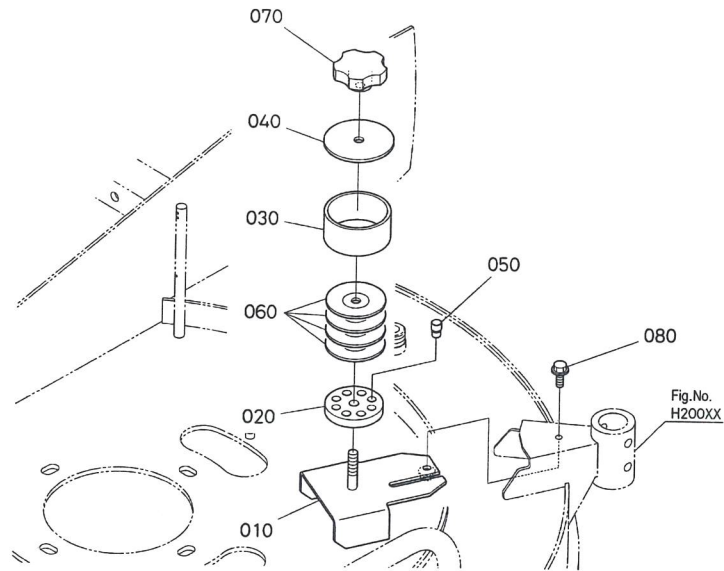
≡ Interchangeable NI Not Interchangeable >> New for Old << Old for New

No.	Part No.	Part Name	Qty	FRT[h]	IC	Serial No./PIN	Remarks	Kg
010	K5433-72725	COVER,DUCT FRONT	1	-				3.15
020	K5453-72732	PIN(MOWER COVER)	1	-				0.108
030	05525-51000	PIN SNAP	2	-				0.002
040	K5453-72750	SPRING,MOWER	2	-				0.02
050	04015-50100	WASHER,PLAIN	4	-				0.016
060	05525-51000	PIN SNAP	4	-				0.002
070	K5433-72760	PLATE, DUCT FRONT1	1	-				0.11
080	K5433-72770	RUBBER,DUCT FRONT	1	-				0.22
090	K5433-72780	PLATE,DUCT FRONT2	1	-				0.11
100	01754-50610	BOLT,FLANGE	2	-				0.006
110	34070-43670	BOLT(COLUMN,STEERING)	2	-				0.02
120	02751-50080	NUT,FLANGE	2	-				0.006



≡ Interchangeable || Not Interchangeable >> New for Old << Old for New

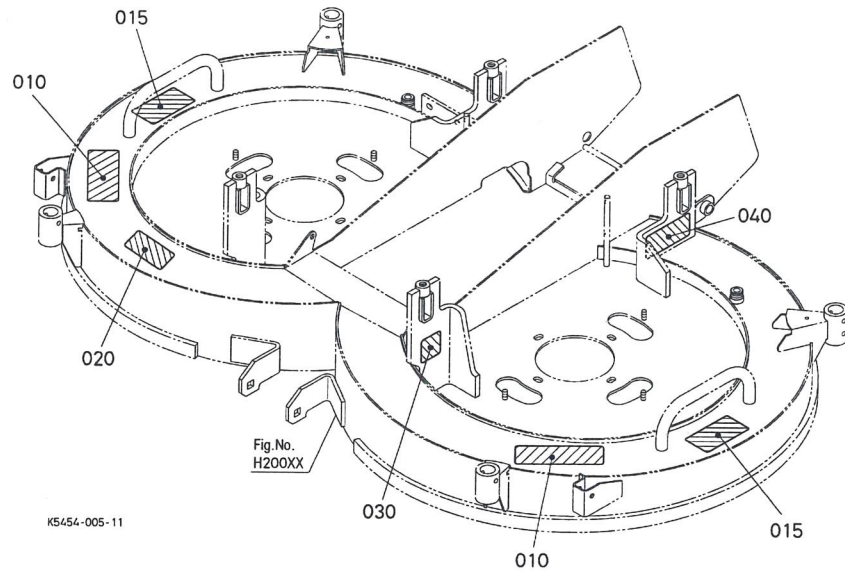
No.	Part No.	Part Name	Qty	FRT[h]	IC	Serial No./PIN	Remarks	Kg
010	K5645-42200	ASSY,GAUGE WHEEL	4	-				1.32
020	K5371-42110	GAUGE WHEEL,5.0	4	-				0.46
030	01073-51602	BOLT	4	-				0.21
040	04013-50160	WASHER,PLAIN	8	-				0.011
050	02072-50160	NUT	4	-				0.022
060	K5645-72682	PIN,GAUGE WHEEL	4	-				0.62
070	75599-51235	PIN,CLEVIS 5/16*1.75	4	-				0.03
080	K3111-72742	RING(SNAP)	4	-				0.01
090	K5112-72420	ROLLER(ANTI-SCALP)	1	-				0.15
100	K5112-72653	PIN,GAUGE 2.5	1	-				0.3
110	75599-53173	PIN,COTTER(1/8*1)	2	-				0.002



K5453-009-11

≡ Interchangeable NI Not Interchangeable >> New for Old << Old for New

No.	Part No.	Part Name	Qty	FRT[h]	IC	Serial No./PIN	Remarks	Kg
010	K5453-72112	STAY,HOLDER SPARE	1	-				0.255
020	K5453-72120	RUBBER,HOLDER	1	-				0.015
030	K5453-72130	PIPE,HOLDER SPARE	1	-				0.12
040	K5453-72140	PLATE,HOLDER SPARE	1	-				0.065
050	K5453-34590	PIN,BLADE	8	-			SPARE PARTS	0.006
060	K5371-34352	SPRING,CORN	4	-			SPARE PARTS	0.03
070	K2561-57170	NUT,KNOB	1	-				0.015
080	01754-50616	BOLT,FLANGE	1	-				0.006



≡ Interchangeable NI Not Interchangeable >> New for Old << Old for New

No.	Part No.	Part Name	Qty	FRT[h]	IC	Serial No./PIN	Remarks	Kg
010	K5254-73110	LABEL,WARNING	2	-		<=50635		0.005
010	K5644-41790	LABEL(WARNING 2)	2	-	NI	>=50636		0.003
015	K5622-41800	LABEL(WARNING,3)	2	-		>=50636		0.0
020	K5125-73130	LABEL,ANTI-SCALP	1	-				0.0
030	K5203-73170	LABEL, LWA	1	-				0.002
040	----	NAMEPLATE	1	-				0.0