

≡ Interchangeable

NI Not Interchangeable

>> New for Old

<< Old for New

| No. | Part No. | Part Name | Qty | FRT[h] | IC | Serial No./PIN | Remarks | Kg |
|-----|-------------|----------------------|-----|--------|----|----------------|---------|-------|
| 010 | K5681-32030 | ASSY JOINT,UNIVERSAL | 1 | - | | | | 3.51 |
| 020 | K5646-31130 | YOKE,PTO | 1 | - | | | | 0.4 |
| 030 | K5646-31140 | YOKE,SHAFT | 1 | - | | | | 1.01 |
| 040 | K5646-31150 | YOKE,QUICK | 1 | - | | | | 0.55 |
| 050 | K5681-31170 | ASSY YOKE,SLEEVE | 1 | - | | | | 1.095 |
| 060 | K5681-31160 | YOKE,SLEEVE | 1 | - | | | | 1.085 |
| 070 | 06613-10675 | NIPPLE,GREASE | 1 | - | | | | 0.003 |
| 080 | K5646-31180 | ASSY JOINT,CROSS | 2 | - | | | | 0.25 |
| 090 | K5646-31220 | JOINT,CROSS | 2 | - | | | | 0.235 |
| 100 | K5646-32120 | RING,SNAP | 8 | - | | | | 0.001 |
| 110 | 70720-31212 | NIPPLE,GREASE | 2 | - | | | | 0.006 |
| 110 | H6660-99100 | NIPPLE,GREASE | 2 | - | >> | | | 0.006 |

S00101 UNIVERSAL JOINT ## RCK60P-F36EC

Update Date: 2018/07/19

S.No.<=39999 S.No.<=39999

Printing Date: 2022/03/09

RCK60P-F36EC MOWER

≡ Interchangeable

NI Not Interchangeable

>> New for Old

<< Old for New

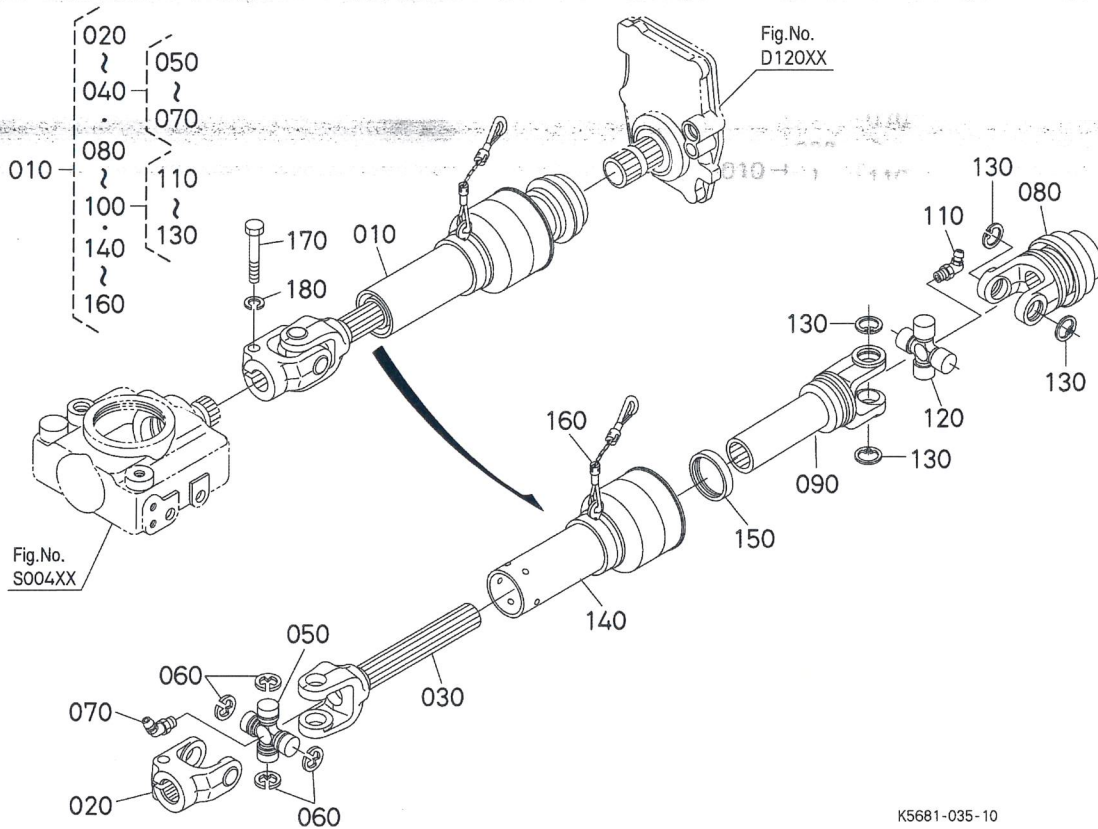
| No. | Part No. | Part Name | Qty | FRT[h] | IC | Serial No./PIN | Remarks | Kg |
|-----|-------------|--------------------|-----|--------|----|-----------------|----------|-------|
| 120 | 01053-51040 | HEX.BOLT | 1 | - | | 120 01053-51040 | HEX BOLT | 0.035 |
| 130 | 04512-50100 | WASHER,SPRING LOCK | 1 | - | | | | 0.003 |

S00102 UNIVERSAL JOINT ## RCK60P-F36EC

S.No.>=40001 S.No.>=40001
RCK60P-F36EC MOWER

Update Date: 2018/07/19

Printing Date: 2022/03/09



≡ Interchangeable

NI Not Interchangeable

>> New for Old

<< Old for New

| No. | Part No. | Part Name | Qty | FRT[h] | IC | Serial No./PIN | Remarks | Kg |
|-----|-------------|----------------------|-----|--------|----|----------------|---------|-------|
| 010 | K5682-32030 | ASSY JOINT,UNIVERSAL | 1 | - | | | | 3.97 |
| 020 | K5646-31130 | YOKE,PTO | 1 | - | | | | 0.4 |
| 030 | K5646-31140 | YOKE,SHAFT | 1 | - | | | | 1.01 |
| 040 | K5646-31180 | ASSY JOINT,CROSS | 1 | - | | | | 0.25 |
| 050 | K5646-31220 | JOINT,CROSS | 1 | - | | | | 0.235 |
| 060 | K5646-32120 | RING,SNAP | 4 | - | | | | 0.001 |
| 070 | 70720-31212 | NIPPLE,GREASE | 1 | - | | | | 0.006 |
| 070 | H6660-99100 | NIPPLE,GREASE | 1 | - | >> | | | 0.006 |
| 080 | K5669-31150 | YOKE,QUICK | 1 | - | | | | 0.6 |
| 090 | K5682-31170 | ASSY YOKE,SLEEVE | 1 | - | | | | 1.295 |
| 100 | 70720-32110 | ASSY JOINT,CROSS | 1 | - | | | | 0.2 |
| 110 | 70720-31212 | NIPPLE,GREASE | 1 | - | | | | 0.006 |

S00102 UNIVERSAL JOINT ## RCK60P-F36EC

Update Date: 2018/07/19

S.No.>=40001 S.No.>=40001

Printing Date: 2022/03/09

RCK60P-F36EC MOWER

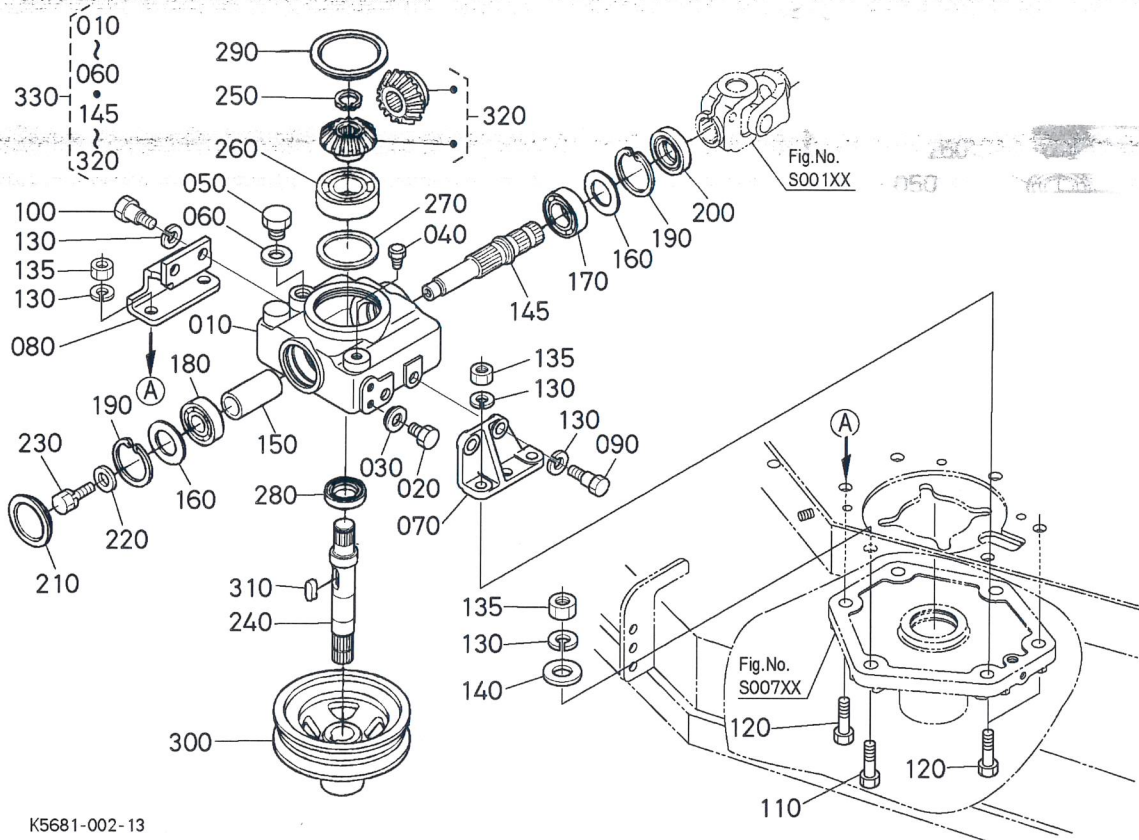
≡ Interchangeable

NI Not Interchangeable

>> New for Old

<< Old for New

| No. | Part No. | Part Name | Qty | FRT[h] | IC | Serial No./PIN | Remarks | Kg |
|-----|-------------|--------------------|-----|--------|----|----------------|---------------|-------|
| 110 | H6660-99100 | NIPPLE,GREASE | 1 | - | >> | 0 H6660-99100 | NIPPLE,GREASE | 0.006 |
| 120 | 70720-31182 | JOINT,CROSS | 1 | - | | | | 0.21 |
| 130 | 70720-32120 | RING,SNAP | 4 | - | | | | 0.001 |
| 140 | K5682-31190 | SAFETY GUARD | 1 | - | | | | 0.172 |
| 150 | 70870-43170 | RING,SLIDE | 1 | - | | | | 0.015 |
| 160 | 70815-58220 | ASSY CHAIN | 1 | - | | | | 0.05 |
| 170 | 01053-51040 | HEX.BOLT | 1 | - | | | | 0.035 |
| 180 | 04512-50100 | WASHER,SPRING LOCK | 1 | - | | | | 0.003 |



≡ Interchangeable

NI Not Interchangeable

>> New for Old

<< Old for New

| No. | Part No. | Part Name | Qty | FRT[h] | IC | Serial No./PIN | Remarks | Kg |
|-----|-------------|-----------------|-----|--------|----|----------------|---------|-------|
| 010 | K5681-33110 | CASE,BEVEL GEAR | 1 | - | | | | 2.69 |
| 020 | 01153-50812 | HEX.BOLT | 2 | - | | | | 0.008 |
| 030 | 04717-00800 | WASHER,SEAL | 2 | - | | | | 0.001 |
| 040 | K5761-33250 | VENT VALVE | 1 | - | | <=10489 | | 0.006 |
| 040 | K5761-33252 | PLUG,BREATHER | 1 | - | >> | >=10490 | | 0.006 |
| 050 | 06331-35016 | PLUG | 1 | - | | | | 0.04 |
| 060 | 04711-00300 | PACKING | 1 | - | | | | 0.001 |
| 070 | K5647-33130 | STAY,CASE LH | 1 | - | | | | 0.43 |
| 080 | K5647-33150 | STAY,CASE RH | 1 | - | | | | 0.46 |
| 090 | K5763-33210 | BOLT,REAMER 30 | 2 | - | | | | 0.04 |
| 100 | K5647-33230 | BOLT,REAMER 40 | 2 | - | | <=40724 | | 0.05 |
| 100 | K5647-33232 | BOLT,REAMER 40 | 2 | - | >> | >=40725 | | 0.05 |

S00400 BEVEL GEAR CASE ## RCK60P-F36EC
RCK60P-F36EC MOWER

Update Date: 2018/07/19

Printing Date: 2022/03/09

≡ Interchangeable

NI Not Interchangeable

>> New for Old

<< Old for New

| No. | Part No. | Part Name | Qty | FRT[h] | IC | Serial No./PIN | Remarks | Kg |
|-----|-------------|----------------------|-----|--------|----|----------------|---------|-------|
| 110 | 01073-51225 | BOLT | 2 | - | | 0101073-51225 | BOLT | 0.035 |
| 120 | 01073-51240 | HEX.BOLT | 4 | - | | | | 0.049 |
| 130 | 04512-50120 | WASHER,SPRING LOCK | 10 | - | | | | 0.003 |
| 135 | 02074-50120 | NUT | 6 | - | | | | 0.015 |
| 140 | 04015-50120 | WASHER,PLAIN | 2 | - | | | | 0.02 |
| 145 | K5645-33312 | SHAFT,PINION | 1 | - | | | | 0.54 |
| 150 | K5671-33342 | COLLAR | 1 | - | | | | 0.112 |
| 160 | 36330-28420 | SHIM 0.2 | 2 | - | | | 0.2mm | 0.002 |
| 160 | 36330-28410 | SHIM 0.3 | 2 | - | | | 0.3mm | 0.002 |
| 170 | 08101-06205 | BEARING,BALL | 1 | - | | | | 0.12 |
| 180 | 08101-06304 | BEARING,BALL | 1 | - | | | | 0.146 |
| 190 | 04611-00520 | CIR-CLIP,INTERNAL | 2 | - | | | | 0.009 |
| 200 | 76535-33440 | SEAL,OIL | 1 | - | | | | 0.02 |
| 210 | 63313-32270 | CAP | 1 | - | | | | 0.03 |
| 220 | 04015-50100 | WASHER,PLAIN | 1 | - | | | | 0.016 |
| 230 | 01133-51025 | BOLT,SEMS | 1 | - | | | | 0.023 |
| 240 | K5647-33500 | SHAFT,BEVEL GEAR | 1 | - | | | | 0.65 |
| 250 | 04612-00220 | CIR-CLIP,EXTERNAL | 1 | - | | | | 0.001 |
| 260 | 70712-33550 | BEARING,BALL | 1 | - | | | | 0.22 |
| 270 | 70712-33570 | SHIM | 1 | - | | | 0.1mm | 0.001 |
| 270 | 76539-33410 | SHIM | 1 | - | | | 0.2mm | 0.001 |
| 280 | K5761-33540 | SEAL,OIL | 1 | - | | | | 0.01 |
| 290 | 7C765-51260 | CAP | 1 | - | | | | 0.07 |
| 300 | K5371-33520 | PULLY,CENTER | 1 | - | | | | 1.78 |
| 310 | 05712-00728 | KEY,FEATHER | 1 | - | | | | 0.01 |
| 320 | K5763-33320 | KIT GEAR,BEVEL | 1 | - | | | 18-17T | 0.45 |
| 330 | K5682-33100 | ASSY CASE,BEVEL GEAR | 1 | - | | <=40406 | | 5.0 |

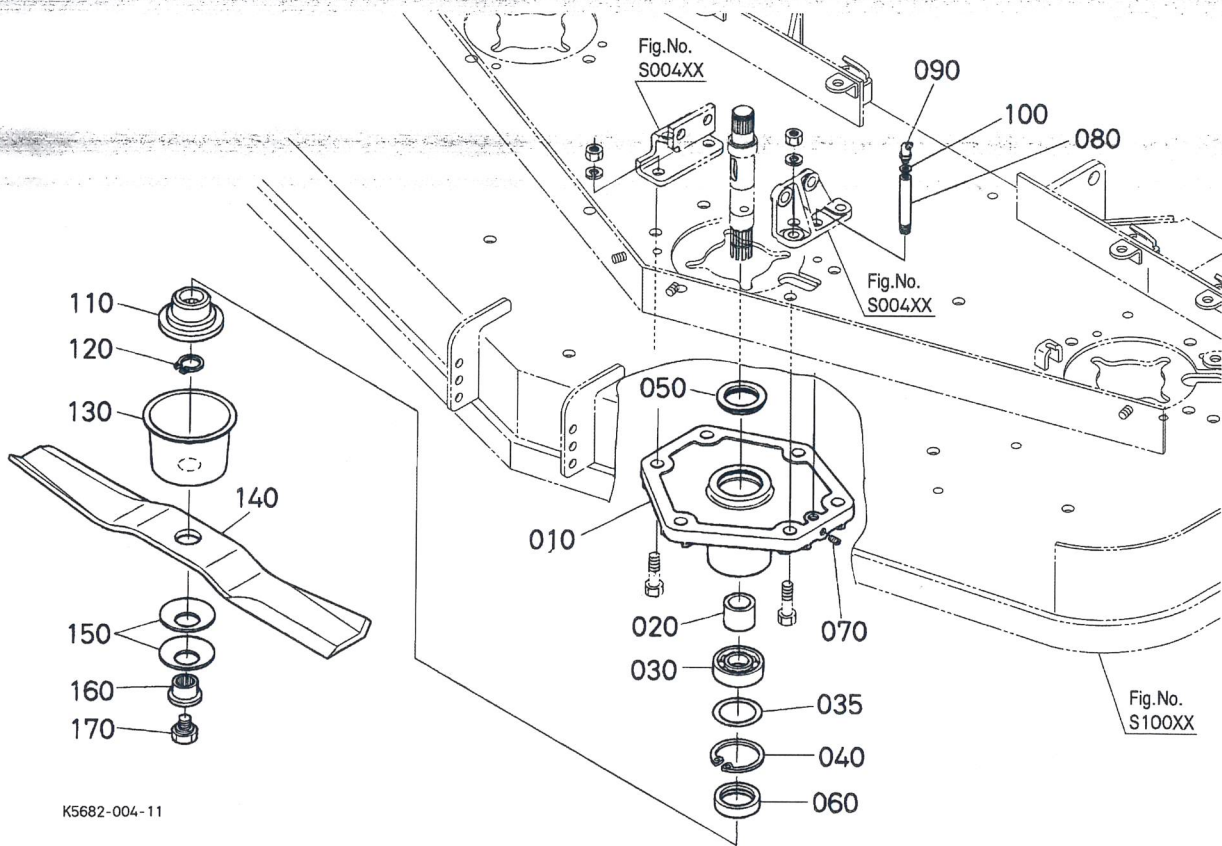
= Interchangeable

NI Not Interchangeable

>> New for Old

<< Old for New

| No. | Part No. | Part Name | Qty | FRT[h] | IC | Serial No./PIN | Remarks | Kg |
|-----|-------------|----------------------|-----|--------|----|----------------|-------------------------|------|
| 330 | K5682-33103 | ASSY,CASE,BEVEL GEAR | 1 | - | >> | U >=4040731 | U3 ASSY,CASE,BEVEL GEAR | 8.88 |



≡ Interchangeable

NI Not Interchangeable

>> New for Old

<< Old for New

| No. | Part No. | Part Name | Qty | FRT[h] | IC | Serial No./PIN | Remarks | Kg |
|-----|-------------|----------------------|-----|--------|----|----------------|---------------------------------|-------|
| 010 | K5647-34113 | HOLDER,CENTER PULLEY | 1 | - | | <=40176 | ORDER BY REF.No.010 NEW PART | 2.38 |
| 010 | K5669-34110 | HOLDER,CENTER PULLEY | 1 | - | >> | >=40177 | | 2.362 |
| 010 | K5669-34113 | HOLDER,PULLEY CENTER | 1 | - | >> | >=42185 | | 0.0 |
| 020 | K5647-33520 | COLLAR,CENTER | 1 | - | | | | 0.09 |
| 030 | 08101-06205 | BEARING,BALL | 1 | - | | | | 0.12 |
| 035 | K5647-27410 | SHIM,0.5 | 1 | - | | | 0.5mm | 0.001 |
| 040 | 04611-00520 | CIR-CLIP,INTERNAL | 1 | - | | | | 0.009 |
| 050 | 70722-34120 | SEAL,OIL | 1 | - | | | | 0.025 |
| 060 | 70725-34162 | SEAL,OIL | 1 | - | | | | 0.024 |
| 070 | 03410-50608 | SCREW,SLOTTED | 1 | - | | | | 0.001 |
| 080 | K5763-34130 | PIPE EXTENSION | 1 | - | | | | 0.023 |
| 090 | K5763-44250 | NIPPLE,GREASE(45') | 1 | - | | <=41190 | 45DEG. | 0.01 |

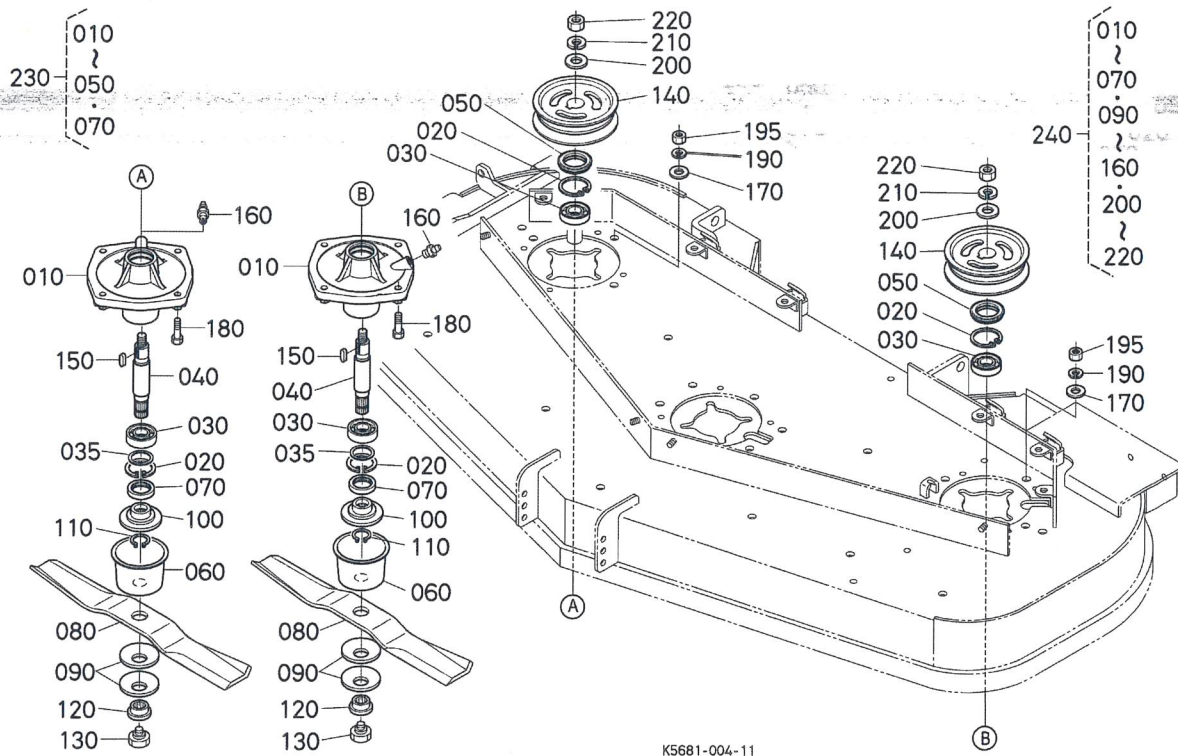
= Interchangeable

NI Not Interchangeable

>> New for Old

<< Old for New

| No. | Part No. | Part Name | Qty | FRT[h] | IC | Serial No./PIN | Remarks | Kg |
|-----|-------------|--------------------|-----|--------|-----|----------------|--------------------------|-------|
| 090 | K5763-44252 | NIPPLE(GREASE,45') | 1 | - | >>> | >=41191 | 45DEG NIPPLE(GREASE,45') | 0.01 |
| 100 | K5763-27340 | SHIM,ADJUST | 1 | - | | | | 0.001 |
| 110 | K5761-34152 | BOSS,SPLINE | 1 | - | | | | 0.28 |
| 110 | K5651-34140 | BOSS(SPLINE) | 1 | - | = | | | 0.28 |
| 120 | 04612-00220 | CIR-CLIP,EXTERNAL | 1 | - | | | | 0.001 |
| 130 | K5647-34310 | COVER,DUST | 1 | - | | <=30700 | | 0.17 |
| 130 | K5647-34312 | COVER,DUST | 1 | - | >> | >=30701 | | 0.258 |
| 140 | K5651-34340 | BLADE,H20 | 1 | - | | | H20 | 1.55 |
| 150 | K5651-34350 | SPRING,LEAF | 2 | - | | <=30064 | | 0.07 |
| 150 | K5651-34352 | SPRING,PLATE | 2 | - | >> | >=30065 | | 0.07 |
| 160 | 76539-34392 | JOINT,BLADE BOSS | 1 | - | | | | 0.06 |
| 160 | K5651-34380 | BOSS(SPLINE 2) | 1 | - | = | | | 0.0 |
| 170 | K5651-34370 | BOLT(M12*1.25) | 1 | - | | <=40724 | M12*1.25 | 0.08 |
| 170 | K5651-34372 | BOLT(M) | 1 | - | >> | >=40725 | M12*1.25 | 0.08 |



≡ Interchangeable

NI Not Interchangeable

>> New for Old

<< Old for New

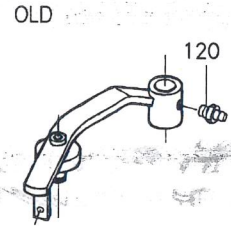
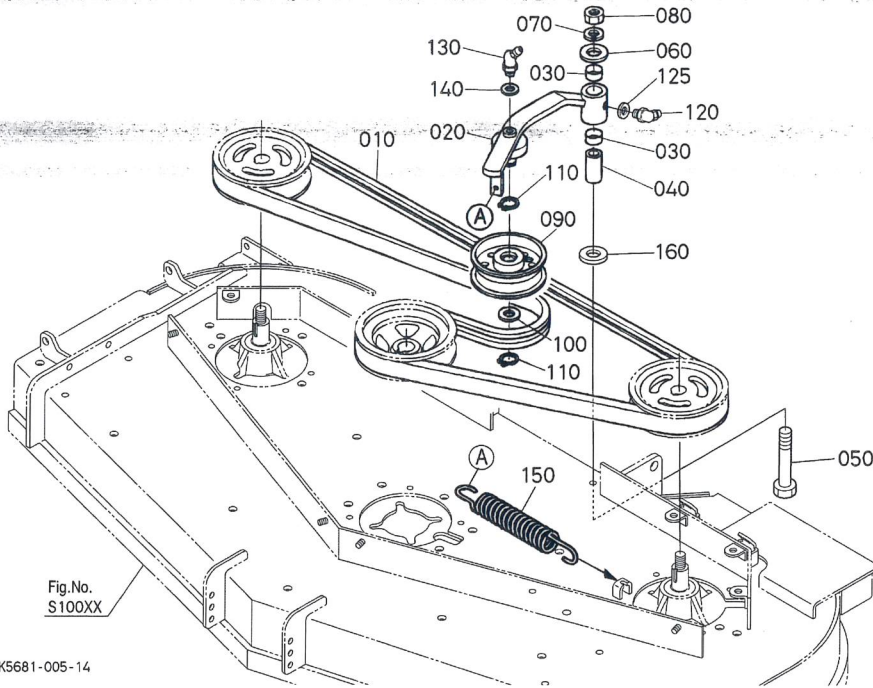
| No. | Part No. | Part Name | Qty | FRT[h] | IC | Serial No./PIN | Remarks | Kg |
|-----|-------------|--------------------|-----|--------|----|----------------|---------|-------|
| 010 | K5647-34510 | HOLDER,PULLEY SIDE | 2 | - | | | | 2.46 |
| 020 | 04611-00520 | CIR-CLIP,INTERNAL | 4 | - | | | | 0.009 |
| 030 | 08101-06205 | BEARING,BALL | 4 | - | | | | 0.12 |
| 035 | K5647-27410 | SHIM,0.5 | 2 | - | | | 0.5mm | 0.001 |
| 040 | K5647-34550 | SHAFT SPINDLE | 2 | - | | | | 0.71 |
| 040 | K5647-34540 | SHAFT(SPINDLE) | 2 | - | ≡ | | | 0.0 |
| 050 | 70722-34120 | SEAL,OIL | 2 | - | | | | 0.025 |
| 060 | K5647-34310 | COVER,DUST | 2 | - | | <=30700 | | 0.17 |
| 060 | K5647-34312 | COVER,DUST | 2 | - | >> | >=30701 | | 0.258 |
| 070 | 70725-34162 | SEAL,OIL | 2 | - | | | | 0.024 |
| 080 | K5651-34340 | BLADE,H20 | 2 | - | | | H20 | 1.55 |
| 090 | K5651-34350 | SPRING,LEAF | 4 | - | | <=30064 | | 0.07 |
| 090 | K5651-34352 | SPRING,PLATE | 4 | - | >> | >=30065 | | 0.07 |

= Interchangeable
NI Not Interchangeable
>> New for Old
<< Old for New

| No. | Part No. | Part Name | Qty | FRT[h] | IC | Serial No./PIN | Remarks | Kg |
|-----|-------------|-------------------------|-----|--------|----|----------------|----------|-------|
| 100 | K5761-34152 | BOSS,SPLINE | 2 | - | | | | 0.28 |
| 100 | K5651-34140 | BOSS(SPLINE) | 2 | - | = | | | 0.28 |
| 110 | 04612-00220 | CIR-CLIP,EXTERNAL | 2 | - | | | | 0.001 |
| 120 | 76539-34392 | JOINT,BLADE BOSS | 2 | - | | | | 0.06 |
| 120 | K5651-34380 | BOSS(SPLINE 2) | 2 | - | = | | | 0.0 |
| 130 | K5651-34370 | BOLT(M12*1.25) | 2 | - | | <=40724 | M12*1.25 | 0.08 |
| 130 | K5651-34372 | BOLT(M) | 2 | - | >> | >=40725 | M12*1.25 | 0.08 |
| 140 | K5651-33580 | PULLEY, SIDE | 2 | - | | | | 1.6 |
| 150 | 05712-00722 | KEY, FEATHER | 2 | - | | | | 0.009 |
| 160 | K1122-15150 | NIPPLE,GREASE | 2 | - | | <=40749 | M6*1.0 | 0.002 |
| 160 | K1122-15152 | NIPPLE(GREASE,M6*1.0) | 2 | - | >> | >=40750 | M6*1.0 | 0.002 |
| 170 | 04015-50120 | WASHER,PLAIN | 8 | - | | | | 0.02 |
| 180 | 01073-51235 | HEX.BOLT | 8 | - | | | | 0.045 |
| 190 | 04512-50120 | WASHER,SPRING LOCK | 8 | - | | | | 0.003 |
| 195 | 02074-50120 | NUT | 8 | - | | | | 0.015 |
| 200 | K5651-34560 | WASHER,PLAIN | 2 | - | | | | 0.024 |
| 210 | 75599-33017 | WASHER,SPRING LOCK(5/8) | 2 | - | | | | 0.005 |
| 220 | 02074-50160 | NUT | 2 | - | | | | 0.029 |
| 230 | K5647-97600 | KIT A,SPINDLE ASSY. | 1 | - | | | | 4.09 |
| 240 | K5647-97700 | KIT B,SPINDLE ASSY. | 1 | - | | | | 6.33 |

S01301 TENSION PULLEY ## RCK60P-F36EC
RCK60P-F36EC MOWER

Update Date: 2018/07/19
Printing Date: 2022/03/09



≡ Interchangeable

NI Not Interchangeable

>> New for Old

<< Old for New

| No. | Part No. | Part Name | Qty | FRT[h] | IC | Serial No./PIN | Remarks | Kg |
|-----|-------------|--------------------------|-----|--------|----|----------------|---------|-------|
| 010 | K5647-34710 | BELT,MULTI | 1 | - | | | | 0.9 |
| 020 | K5647-34730 | ARM,TENSION | 1 | - | | | | 0.73 |
| 030 | K5651-20150 | BUSHING(TENSION) | 2 | - | | <=42184 | | 0.017 |
| 030 | K5651-20152 | BUSHING(TENSION #12DP10) | 2 | - | >> | >=42185 | | 0.017 |
| 040 | K5651-34780 | COLLAR(TENSION) | 1 | - | | | | 0.055 |
| 050 | 01073-51270 | BOLT | 1 | - | | | | 0.06 |
| 060 | 75599-32015 | WASHER,PLAIN(1/2) | 1 | - | | | | 0.01 |
| 070 | 04512-50120 | WASHER,SPRING LOCK | 1 | - | | | | 0.003 |
| 080 | 02074-50120 | NUT | 1 | - | | | | 0.015 |
| 090 | K5651-34880 | PULLEY,TENSION | 1 | - | | | | 0.55 |
| 100 | K5651-34800 | SEAL(BEARING) | 1 | - | | <=41194 | | 0.001 |
| 100 | K5651-34802 | SEAL(BEARING) | 1 | - | >> | >=41195 | | 0.001 |
| 110 | 04612-00170 | CIR-CLIP,EXTERNAL | 2 | - | | | | 0.001 |
| 120 | K1122-15150 | NIPPLE,GREASE | 1 | - | | <=10007 | | 0.002 |
| 120 | K5763-44250 | NIPPLE(GREASE,45') | 1 | - | >> | >=10008 | | 0.01 |
| 120 | K5763-44252 | NIPPLE(GREASE,45') | 1 | - | >> | >=41191 | | 0.01 |

S01301 TENSION PULLEY ## RCK60P-F36EC
RCK60P-F36EC MOWER

Update Date: 2018/07/19

Printing Date: 2022/03/09

= Interchangeable

NI Not Interchangeable

>> New for Old

<< Old for New

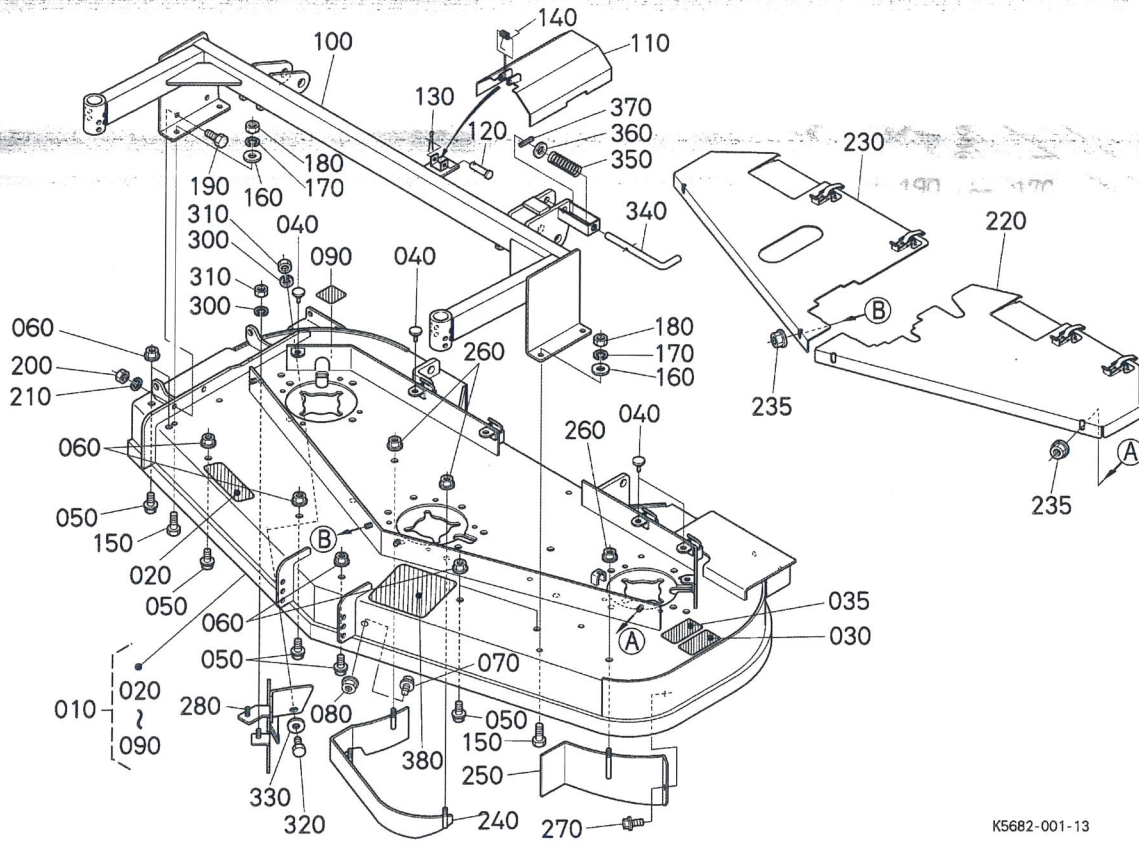
| No. | Part No. | Part Name | Qty | FRT[h] | IC | Serial No./PIN | Remarks | Kg |
|-----|-------------|--------------------|-----|--------|----|----------------|-------------|-------|
| 125 | K5763-27340 | SHIM,ADJUST | 1 | - | | >=100084 | SHIM ADJUST | 0.001 |
| 130 | K5763-12100 | NIPPLE(GREASE,45') | 1 | - | | <=41194 | | 0.007 |
| 130 | K5763-12102 | NIPPLE(GREASE,45') | 1 | - | >> | >=41195 | | 0.007 |
| 140 | K5763-27350 | SHIM,ADJUST (M8) | 1 | - | | | | 0.001 |
| 150 | K5763-34750 | SPRING(TENSION) | 1 | - | | <=40056 | | 0.17 |
| 150 | K5668-34750 | SPRING,TENSION | 1 | - | >> | >=40057 | | 0.0 |
| 160 | 04015-50120 | WASHER,PLAIN | 1 | - | | >=40144 | | 0.02 |

S10001 MOWER DECK ## RCK60P-F36EC

S.No.<=20690 S.No.<=20690
RCK60P-F36EC MOWER

Update Date: 2018/07/19

Printing Date: 2022/03/09



K5682-001-13

≡ Interchangeable

NI Not Interchangeable

>> New for Old

<< Old for New

| No. | Part No. | Part Name | Qty | FRT[h] | IC | Serial No./PIN | Remarks | Kg |
|-----|-------------|-----------------|-----|--------|----|----------------|---------|-------|
| 010 | K5682-41100 | ASSY DECK MOWER | 1 | - | | | | 0.0 |
| 020 | K5652-41780 | LABEL,WARNING | 1 | - | | | | 0.01 |
| 030 | K5652-41793 | LABEL,WARNING 2 | 1 | - | | | | 0.006 |
| 035 | K5652-41800 | LABEL,WARNING | 1 | - | | | | 0.001 |
| 040 | K5647-41510 | CUSHION | 6 | - | | | | 0.007 |
| 050 | 01774-51020 | BOLT,FLANGE | 7 | - | | | | 0.02 |
| 060 | 02131-50100 | NUT | 7 | - | | | | 0.01 |
| 070 | 01754-50820 | BOLT,FLANGE | 1 | - | | | | 0.015 |
| 080 | 02121-50080 | NUT | 1 | - | | | | 0.01 |
| 090 | K5203-73170 | LABEL, LWA | 1 | - | | | | 0.002 |
| 100 | K5681-41110 | FRAME,FRONT | 1 | - | | | | 0.0 |
| 110 | K5681-33032 | COVER,JOINT | 1 | - | | | | 0.0 |

This content is the information at the time of publication on this site, information such as the part name and part number may be different from the present. Illustrations of products and parts that are posted are image diagrams.

c27fe64f-5ad1-48c1-aa24-d61148b9c5bd

S10001 MOWER DECK ## RCK60P-F36EC

S.No.<=20690 S.No.,<=20690
RCK60P-F36EC MOWER

S10001 MOWER DECK ## RCK60P-F36EC

Update Date: 2018/07/19

Printing Date: 2022/03/09

= Interchangeable

NI Not Interchangeable

>> New for Old

<< Old for New

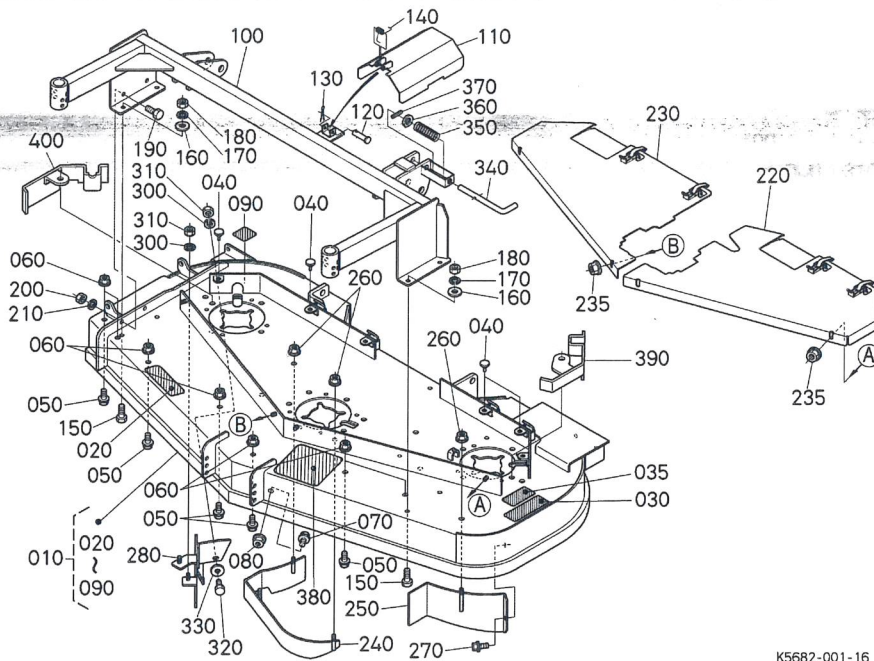
| No. | Part No. | Part Name | Qty | FRT[h] | IC | Serial No./PIN | Remarks | Kg |
|-----|-------------|------------------------|-----|--------|----|-----------------|-----------|-------|
| 120 | 05122-50840 | PIN,JOINT | 1 | - | | 120-05122-50840 | PIN JOINT | 0.017 |
| 130 | 05511-50220 | PIN,SPLIT | 1 | - | | | | 0.001 |
| 140 | K5681-33020 | SPRING,BELT COVER | 1 | - | | | | 0.0 |
| 150 | 01073-51025 | BOLT | 4 | - | | | | 0.025 |
| 160 | 04015-50100 | WASHER,PLAIN | 4 | - | | | | 0.016 |
| 170 | 04512-50100 | WASHER,SPRING LOCK | 4 | - | | | | 0.003 |
| 180 | 02018-50100 | NUT | 4 | - | | | | 0.011 |
| 190 | 01073-51030 | BOLT | 2 | - | | | | 0.028 |
| 200 | 02018-50100 | NUT | 2 | - | | | | 0.011 |
| 210 | 04512-50100 | WASHER,SPRING LOCK | 2 | - | | | | 0.003 |
| 220 | K5681-41182 | COVER,LH | 1 | - | | | | 0.0 |
| 230 | K5681-41200 | COVER,RH | 1 | - | | | | 0.0 |
| 235 | 02751-50080 | NUT,FLANGE | 4 | - | | | | 0.006 |
| 240 | K5681-41510 | PLATE,BAFFLE | 2 | - | | | | 0.0 |
| 250 | K5681-41530 | PLATE,FRONT LH | 1 | - | | | | 0.0 |
| 260 | 02131-50100 | NUT | 7 | - | | | | 0.01 |
| 270 | 01774-51020 | BOLT,FLANGE | 2 | - | | | | 0.02 |
| 280 | K5681-41400 | GUIDE,DISCHARGE | 1 | - | | | | 0.0 |
| 300 | 04512-50080 | WASHER,SPRING LOCK | 3 | - | | | | 0.002 |
| 310 | 02054-50080 | HEX.NUT | 3 | - | | | | 0.005 |
| 320 | 01053-50820 | HEX.BOLT | 1 | - | | | | 0.012 |
| 330 | 04013-50080 | WASHER,PLAIN | 1 | - | | | | 0.003 |
| 340 | K5681-41140 | PIN,FRONT | 1 | - | | | | 0.0 |
| 350 | K5681-41150 | SPRING,PIN | 1 | - | | | | 0.0 |
| 360 | 75599-32016 | WASHER,PLAIN(9/16) | 1 | - | | | | 0.009 |
| 370 | 75599-52532 | PIN,SPRING(7/32*1-5/8) | 1 | - | | | | 0.005 |
| 380 | K5681-41190 | LABEL,HEIGHT | 1 | - | | | | 0.0 |

S10002 MOWER DECK ## RCK60P-F36EC

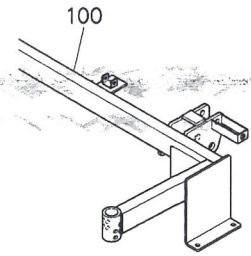
S.No.20691 to 42785 NOTE : ORDER BY REF.No.010/100/150/160/170/180-NEW PARTS SET RCK60P-F36EC MOWER

Update Date: 2018/07/19

Printing Date: 2022/03/09



OLD



K5682-001-16

K5682-801-10

≡ Interchangeable

NI Not Interchangeable

>> New for Old

<< Old for New

| No. | Part No. | Part Name | Qty | FRT[h] | IC | Serial No./PIN | Remarks | Kg |
|-----|-------------|-----------------|-----|--------|----|----------------|----------|-------|
| 010 | K5682-41100 | ASSY DECK MOWER | 1 | - | | <=30846 | | 0.0 |
| 010 | K5682-41102 | ASSY DECK MOWER | 1 | - | >> | >=30847 | SEE NOTE | 0.0 |
| 010 | K5682-41103 | ASSY DECK MOWER | 1 | - | NI | >=40001 | | 0.0 |
| 010 | K5682-41104 | ASSY,MOWER DECK | 1 | - | NI | >=50013 | | 0.0 |
| 020 | K5652-41780 | LABEL,WARNING | 1 | - | | | | 0.01 |
| 030 | K5652-41793 | LABEL,WARNING 2 | 1 | - | | | | 0.006 |
| 035 | K5652-41800 | LABEL,WARNING | 1 | - | | | | 0.001 |
| 040 | K5647-41510 | CUSHION | 6 | - | | | | 0.007 |
| 050 | 01774-51020 | BOLT,FLANGE | 7 | - | | | | 0.02 |
| 060 | 02131-50100 | NUT | 7 | - | | | | 0.01 |
| 070 | 01754-50820 | BOLT,FLANGE | 1 | - | | | | 0.015 |
| 080 | 02121-50080 | NUT | 1 | - | | | | 0.01 |
| 090 | K5203-73170 | LABEL, LWA | 1 | - | | | | 0.002 |
| 100 | K5681-41110 | FRAME,FRONT | 1 | - | | <=30846 | | 0.0 |
| 100 | K5681-41113 | FRAME,FRONT | 1 | - | NI | >=30847 | SEE NOTE | 0.0 |
| 100 | K5681-41114 | FRAME,FRONT | 1 | - | NI | >=40001 | | 0.0 |

This content is the information at the time of publication on this site, information such as the part name and part number may be different from the present. Illustrations of products and parts that are posted are image diagrams.

94d18c8d-7a3b-4b9f-b396-b8e56fbb8196

S10002 MOWER DECK ## RCK60P-F36EC

S10002 MOWER DECK

Update Date: 2018/07/19

S.No.20691 to 42785 NOTE : ORDER BY REF.No.010/100/150/160/170/180 NEW PARTS SET
RCK60P-F36EC MOWER

Printing Date: 2022/03/09

≡ Interchangeable

NI Not Interchangeable

>> New for Old

<< Old for New

| No. | Part No. | Part Name | Qty | FRT[h] | IC | Serial No./PIN | Remarks | Kg |
|-----|-------------|--------------------|-----|--------|----|----------------|-------------------|-------|
| 100 | K5681-41115 | FRAME(FRONT) | 1 | - | >> | >=42336 | 105: FRAME(FRONT) | 0.0 |
| 110 | K5682-33032 | COVER,JOINT | 1 | - | | | | 0.0 |
| 120 | 05122-50840 | PIN,JOINT | 1 | - | | | | 0.017 |
| 130 | 05511-50220 | PIN,SPLIT | 1 | - | | | | 0.001 |
| 140 | K5681-33020 | SPRING,BELT COVER | 1 | - | | <=41194 | | 0.0 |
| 140 | K5681-33022 | SPRING | 1 | - | >> | >=41195 | | 0.0 |
| 150 | 01073-51025 | BOLT | 4 | - | | <=39999 | | 0.025 |
| 150 | 01173-51235 | HEX.BOLT | 4 | - | NI | >=40001 | | 0.04 |
| 160 | 04015-50100 | WASHER,PLAIN | 4 | - | | <=39999 | | 0.016 |
| 160 | K5763-14950 | WASHER | 4 | - | NI | >=40001 | | 0.01 |
| 160 | K5763-14952 | WASHER | 4 | - | >> | >=41195 | | 0.01 |
| 170 | 04512-50100 | WASHER,SPRING LOCK | 4 | - | | <=39999 | | 0.003 |
| 170 | 04512-50120 | WASHER,SPRING LOCK | 4 | - | NI | >=40001 | | 0.003 |
| 180 | 02018-50100 | NUT | 4 | - | | <=39999 | | 0.011 |
| 180 | 02572-50120 | NUT,LOCKING | 4 | - | NI | >=40001 | | 0.014 |
| 190 | 01073-51030 | BOLT | 2 | - | | | | 0.028 |
| 200 | 02018-50100 | NUT | 2 | - | | | | 0.011 |
| 210 | 04512-50100 | WASHER,SPRING LOCK | 2 | - | | | | 0.003 |
| 220 | K5682-41180 | COVER,LH | 1 | - | | <=39999 | | 0.0 |
| 220 | K5682-41182 | COVER,LH | 1 | - | >> | >=40001 | | 0.0 |
| 220 | K5682-41184 | COVER(LEFT) | 1 | - | >> | >=50013 | | 0.0 |
| 230 | K5682-41200 | COVER,RH | 1 | - | | <=39999 | | 0.0 |
| 230 | K5682-41202 | COVER,RH | 1 | - | >> | >=40001 | | 0.0 |
| 230 | K5682-41203 | COVER(RH) | 1 | - | >> | >=50013 | | 0.0 |
| 235 | 02751-50080 | NUT,FLANGE | 4 | - | | | | 0.006 |
| 240 | K5681-41510 | PLATE,BAFFLE | 2 | - | | | | 0.0 |
| 250 | K5681-41530 | PLATE,FRONT LH | 1 | - | | | | 0.0 |
| 260 | 02131-50100 | NUT | 7 | - | | | | 0.01 |
| 270 | 01774-51020 | BOLT,FLANGE | 2 | - | | | | 0.02 |

This content is the information at the time of publication on this site, information such as the part name and part number may be different from the present. Illustrations of products and parts that are posted are image diagrams.

S10002 MOWER DECK ## RCK60P-F36EC

S10002 MOWER DECK

Update Date: 2018/07/19

S.No.20691 to 42785 NOTE : ORDER BY REF.No.010/100/150/160/170/180 NEW PARTS SET
RCK60P-F36EC MOWER

Printing Date: 2022/03/09

≡ Interchangeable

NI Not Interchangeable

» New for Old

« Old for New

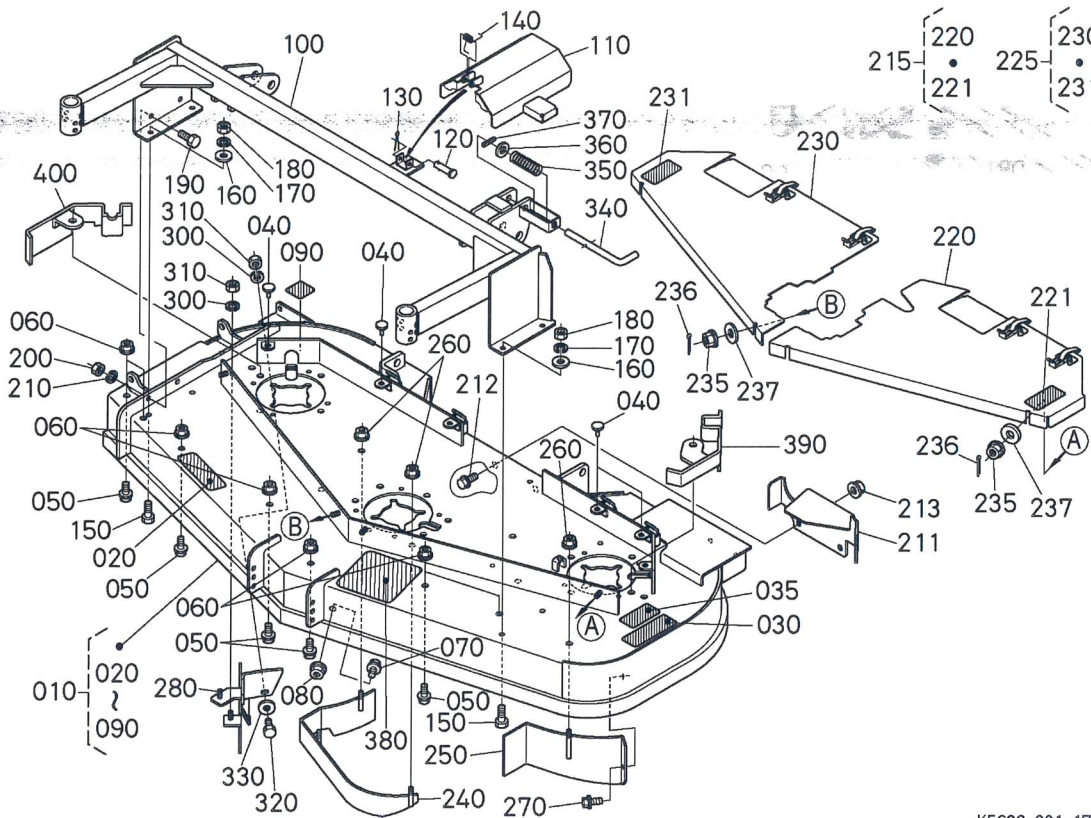
| No. | Part No. | Part Name | Qty | FRT[h] | IC | Serial No./PIN | Remarks | Kg |
|-----|-------------|------------------------|-----|--------|----|------------------|-----------------|-------|
| 280 | K5681-41400 | GUIDE,DISCHARGE | 1 | - | | 1770 K5681-41400 | GUIDE DISCHARGE | 0.0 |
| 300 | 04512-50080 | WASHER,SPRING LOCK | 3 | - | | | | 0.002 |
| 310 | 02054-50080 | HEX.NUT | 3 | - | | | | 0.005 |
| 320 | 01053-50820 | HEX.BOLT | 1 | - | | | | 0.012 |
| 330 | 04013-50080 | WASHER,PLAIN | 1 | - | | | | 0.003 |
| 340 | K5681-41140 | PIN,FRONT | 1 | - | | <=41198 | | 0.0 |
| 340 | K5681-41142 | PIN(FRONT) | 1 | - | » | >=41199 | | 0.0 |
| 350 | K5681-41150 | SPRING,PIN | 1 | - | | <=41194 | | 0.0 |
| 350 | K5681-41152 | SPRING(PIN) | 1 | - | » | >=41195 | | 0.0 |
| 360 | 75599-32016 | WASHER,PLAIN(9/16) | 1 | - | | | | 0.009 |
| 370 | 75599-52532 | PIN,SPRING(7/32*1-5/8) | 1 | - | | | | 0.005 |
| 380 | K5681-41190 | LABEL,HEIGHT | 1 | - | | | | 0.0 |
| 390 | K5682-41210 | PLATE,COVER LH | 1 | - | | | | 0.0 |
| 400 | K5682-41220 | PLATE,COVER RH | 1 | - | | | | 0.0 |

S10003 MOWER DECK ## RCK60P-F36EC

S.No. >=42786 S.No. >=42786
RCK60P-F36EC MOWER

Update Date: 2018/07/19

Printing Date: 2022/03/09



K5682-001-17

≡ Interchangeable

NI Not Interchangeable

>> New for Old

<< Old for New

| No. | Part No. | Part Name | Qty | FRT[h] | IC | Serial No./PIN | Remarks | Kg |
|-----|-------------|-----------------|-----|--------|----|----------------|---------|-------|
| 010 | K5682-41104 | ASSY,MOWER DECK | 1 | - | | | | 0.0 |
| 020 | K5652-41780 | LABEL,WARNING | 1 | - | | | | 0.01 |
| 030 | K5652-41793 | LABEL,WARNING 2 | 1 | - | | | | 0.006 |
| 035 | K5652-41800 | LABEL,WARNING | 1 | - | | | | 0.001 |
| 040 | K5647-41510 | CUSHION | 6 | - | | | | 0.007 |
| 050 | 01774-51020 | BOLT,FLANGE | 7 | - | | | | 0.02 |
| 060 | 02131-50100 | NUT | 7 | - | | | | 0.01 |
| 070 | 01754-50820 | BOLT,FLANGE | 1 | - | | | | 0.015 |
| 080 | 02121-50080 | NUT | 1 | - | | | | 0.01 |
| 090 | K5203-73170 | LABEL, LWA | 1 | - | | | | 0.002 |
| 100 | K5681-41115 | FRAME(FRONT) | 1 | - | | | | 0.0 |
| 110 | K5682-33020 | COVER,JOINT | 1 | - | | | | 0.0 |

S10003 MOWER DECK ## RCK60P-F36EC

S.No.>=42786 S.No.>=42786

RCK60P-F36EC MOWER

S10003 MOWER DECK

Update Date: 2018/07/19

Printing Date: 2022/03/09

= Interchangeable

NI Not Interchangeable

>> New for Old

<< Old for New

| No. | Part No. | Part Name | Qty | FRT[h] | IC | Serial No./PIN | Remarks | Kg |
|-----|-------------|--------------------|-----|--------|----|------------------|-----------|-------|
| 120 | 05122-50840 | PIN,JOINT | 1 | - | | 1120 05122-50840 | PIN JOINT | 0.017 |
| 130 | 05511-50220 | PIN,SPLIT | 1 | - | | | | 0.001 |
| 140 | K5681-33022 | SPRING | 1 | - | | | | 0.0 |
| 150 | 01173-51235 | HEX.BOLT | 4 | - | | | | 0.04 |
| 160 | K5763-14952 | WASHER | 4 | - | | | | 0.01 |
| 170 | 04512-50120 | WASHER,SPRING LOCK | 4 | - | | | | 0.003 |
| 180 | 02572-50120 | NUT,LOCKING | 4 | - | | | | 0.014 |
| 190 | 01073-51030 | BOLT | 2 | - | | | | 0.028 |
| 200 | 02018-50100 | NUT | 2 | - | | | | 0.011 |
| 210 | 04512-50100 | WASHER,SPRING LOCK | 2 | - | | | | 0.003 |
| 211 | K5682-33040 | COVER,JOINT | 1 | - | | | | 0.0 |
| 212 | 01774-51020 | BOLT,FLANGE | 2 | - | | | | 0.02 |
| 213 | 02131-50100 | NUT | 2 | - | | | | 0.01 |
| 215 | K5682-41300 | COVER,ASSY(LEFT) | 1 | - | | | | 0.0 |
| 220 | K5682-41184 | COVER(LEFT) | 1 | - | | | | 0.0 |
| 221 | K5682-41810 | LABEL(DO NOT STEP) | 1 | - | | | | 0.0 |
| 225 | K5682-41310 | COVER,ASSY(RH) | 1 | - | | | | 0.0 |
| 230 | K5682-41203 | COVER(RH) | 1 | - | | | | 0.0 |
| 231 | K5682-41810 | LABEL(DO NOT STEP) | 1 | - | | | | 0.0 |
| 235 | 02751-50080 | NUT,FLANGE | 4 | - | | | | 0.006 |
| 236 | 05511-50218 | PIN,SPLIT | 4 | - | | | | 0.001 |
| 237 | 04015-50080 | WASHER,PLAIN | 4 | - | | | | 0.01 |
| 240 | K5681-41510 | PLATE,BAFFLE | 2 | - | | | | 0.0 |
| 250 | K5681-41530 | PLATE,FRONT LH | 1 | - | | | | 0.0 |
| 260 | 02131-50100 | NUT | 7 | - | | | | 0.01 |
| 270 | 01774-51020 | BOLT,FLANGE | 2 | - | | | | 0.02 |
| 280 | K5681-41400 | GUIDE,DISCHARGE | 1 | - | | | | 0.0 |

S10003 MOWER DECK ## RCK60P-F36EC

S.No.>=42786 S.No.;>=42786
RCK60P-F36EC MOWER

S10003 MOWER DECK

Update Date: 2018/07/19

Printing Date: 2022/03/09

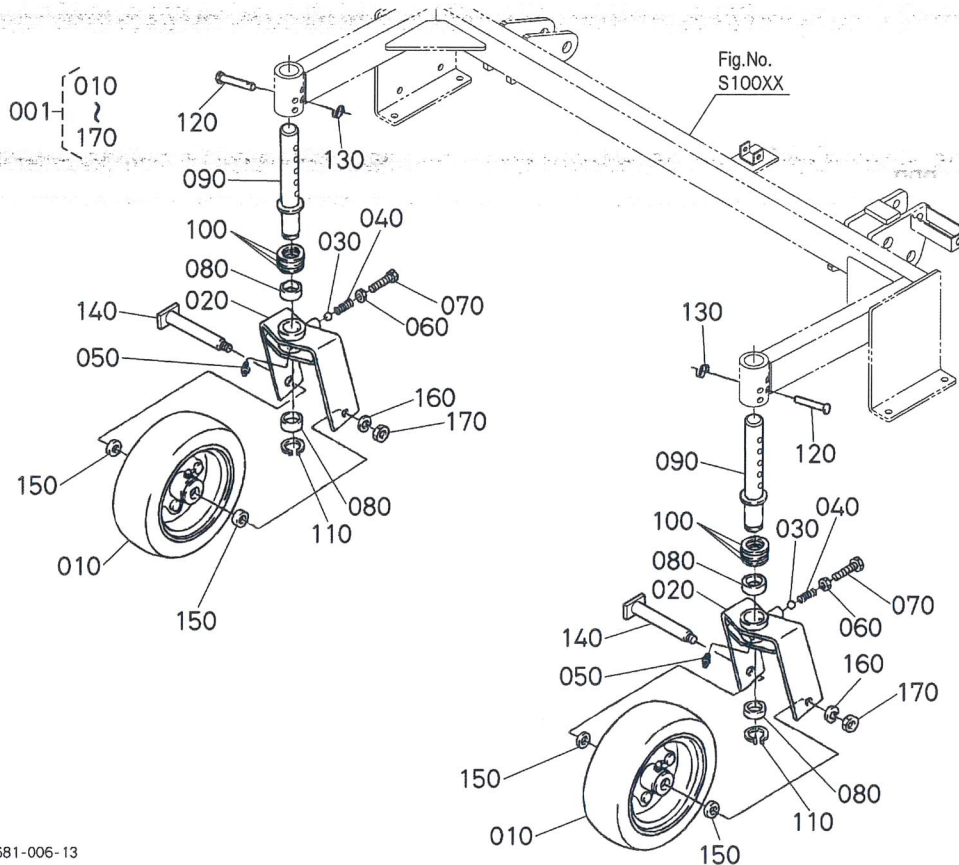
≡ Interchangeable

NI Not Interchangeable

>> New for Old

<< Old for New

| No. | Part No. | Part Name | Qty | FRT[h] | IC | Serial No./PIN | Remarks | Kg |
|-----|-------------|------------------------|-----|--------|----|------------------|--------------------|-------|
| 300 | 04512-50080 | WASHER,SPRING LOCK | 3 | - | | 1300 04512-50080 | WASHER SPRING LOCK | 0.002 |
| 310 | 02054-50080 | HEX.NUT | 3 | - | | | | 0.005 |
| 320 | 01053-50820 | HEX.BOLT | 1 | - | | | | 0.012 |
| 330 | 04013-50080 | WASHER,PLAIN | 1 | - | | | | 0.003 |
| 340 | K5681-41142 | PIN(FRONT) | 1 | - | | | | 0.0 |
| 350 | K5681-41152 | SPRING(PIN) | 1 | - | | | | 0.0 |
| 360 | 75599-32016 | WASHER,PLAIN(9/16) | 1 | - | | | | 0.009 |
| 370 | 75599-52532 | PIN,SPRING(7/32*1-5/8) | 1 | - | | | | 0.005 |
| 380 | K5681-41190 | LABEL,HEIGHT | 1 | - | | | | 0.0 |
| 390 | K5682-41210 | PLATE,COVER LH | 1 | - | | | | 0.0 |
| 400 | K5682-41220 | PLATE,COVER RH | 1 | - | | | | 0.0 |



K5681-006-13

≡ Interchangeable

NI Not Interchangeable

>> New for Old

<< Old for New

| No. | Part No. | Part Name | Qty | FRT[h] | IC | Serial No./PIN | Remarks | Kg |
|-----|-------------|-----------------------|-----|--------|----|----------------|---------|-------|
| 001 | K5651-95300 | WHEEL(FRONT),ASSY | 2 | - | | | | 0.0 |
| 010 | K5651-42240 | WHEEL,FRONT | 2 | - | | | | 2.12 |
| 020 | K5651-34200 | HOLDER GAUGE | 2 | - | | | | 2.75 |
| 030 | 07715-00803 | BALL | 2 | - | | | | 0.002 |
| 040 | K5651-43130 | SPRING,BALL | 2 | - | | <=41258 | | 0.005 |
| 040 | K5651-43132 | SPRING(BALL) | 2 | - | >> | >=41259 | | 0.006 |
| 050 | K1122-15150 | NIPPLE,GREASE | 2 | - | | <=40749 | M6*1.0 | 0.002 |
| 050 | K1122-15152 | NIPPLE(GREASE,M6*1.0) | 2 | - | >> | >=40750 | M6*1.0 | 0.002 |
| 060 | 02074-50120 | NUT | 2 | - | | | | 0.015 |
| 070 | 01073-51225 | BOLT | 2 | - | | | | 0.035 |
| 080 | K5651-42190 | BUSHING,GAUGE HOLDER | 4 | - | | | | 0.045 |
| 090 | K5681-43110 | SHAFT,HOLDER | 2 | - | | <=41168 | | 0.0 |
| 090 | K5681-43112 | SHAFT(HOLDER) | 2 | - | >> | >=41169 | | 0.0 |

This content is the information at the time of publication on this site, information such as the part name and part number may be different from the present. Illustrations of products and parts that are posted are image diagrams.

8123b8cd-16d2-406b-b5b5-62c4a47de893

S10301 FRONT GAUGE WHEEL ## RCK60P-F36EC
RCK60P-F36EC MOWER

Update Date: 2018/07/19

Printing Date: 2022/03/09

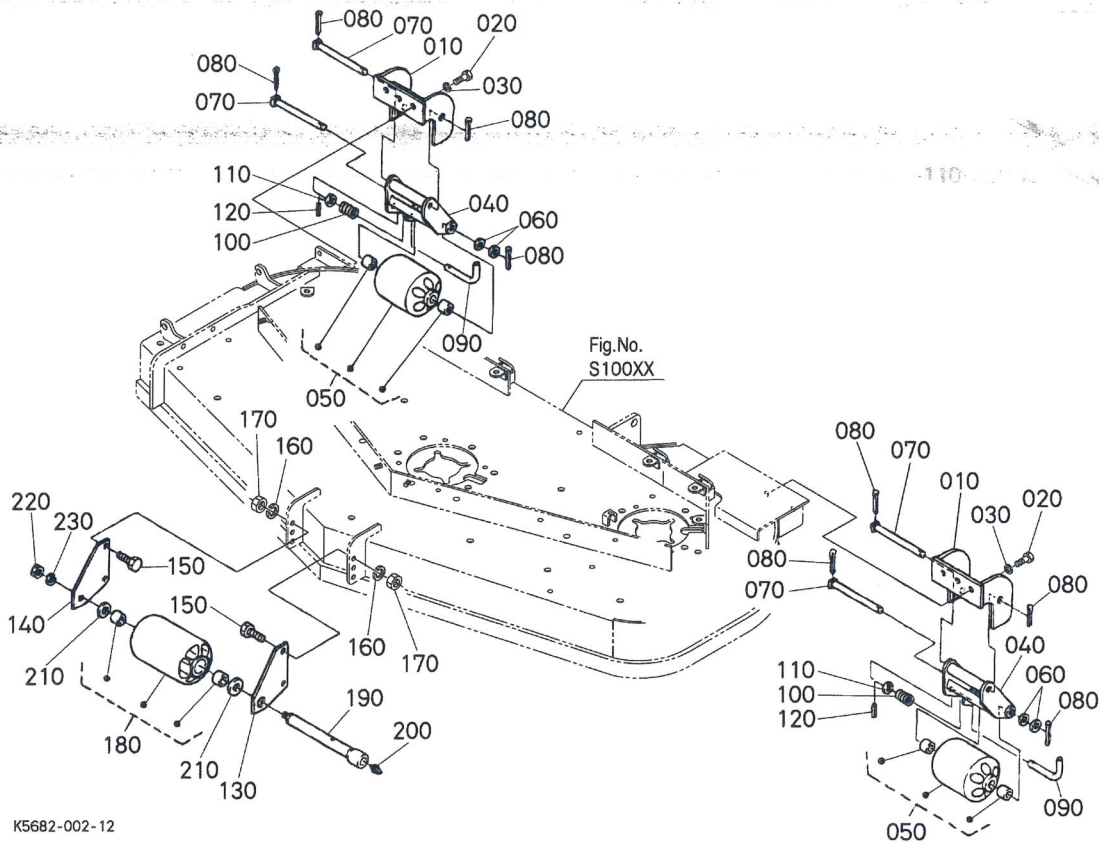
≡ Interchangeable

NI Not Interchangeable

» New for Old

« Old for New

| No. | Part No. | Part Name | Qty | FRT[h] | IC | Serial No./PIN | Remarks | Kg |
|-----|-------------|----------------------|-----|--------|----|----------------|---------------|-------|
| 100 | K5651-43150 | COLLAR,HOLDER | 6 | - | | <=41194 | COLLAR HOLDER | 0.01 |
| 100 | K5651-43152 | COLLAR(HOLDER) | 6 | - | » | >=41195 | | 0.01 |
| 110 | 04612-00300 | CIR-CLIP,EXTERNAL | 2 | - | | | | 0.003 |
| 120 | 75599-51345 | PIN,CLEVIS(3/8*2.25) | 2 | - | | | 3/8 | 0.05 |
| 130 | K5112-72730 | RING,SNAP | 2 | - | | <=41510 | | 0.01 |
| 130 | K5112-72733 | RING(SNAP) | 2 | - | » | >=41511 | | 0.01 |
| 140 | K5681-34210 | SHAFT,FRONT WHEEL | 2 | - | | <=41168 | | 0.0 |
| 140 | K5681-34212 | SHAFT(FRONT WHEEL) | 2 | - | » | >=41169 | | 0.0 |
| 150 | K5651-34220 | COLLAR,WHEEL | 4 | - | | <=40715 | | 0.09 |
| 150 | K5651-34222 | COLLAR,WHEEL | 4 | - | » | >=40716 | | 0.092 |
| 160 | 04512-50120 | WASHER,SPRING LOCK | 2 | - | | | | 0.003 |
| 170 | 02074-50120 | NUT | 2 | - | | | | 0.015 |



K5682-002-12

≡ Interchangeable

NI Not Interchangeable

>> New for Old

<< Old for New

| No. | Part No. | Part Name | Qty | FRT[h] | IC | Serial No./PIN | Remarks | Kg |
|-----|-------------|----------------------|-----|--------|----|----------------|---------|-------|
| 010 | K5681-44210 | SUPPORT, STAY ROLLER | 2 | - | | | | 0.0 |
| 020 | 01073-51025 | BOLT | 4 | - | | | | 0.025 |
| 030 | 04512-50100 | WASHER, SPRING LOCK | 4 | - | | | | 0.003 |
| 040 | K5651-44220 | STAY | 2 | - | | | | 0.84 |
| 050 | K5651-46250 | ROLLER, ANTI-SCALP | 2 | - | | | | 0.38 |
| 060 | 75599-32015 | WASHER, PLAIN(1/2) | 4 | - | | | 1/2 | 0.01 |
| 070 | K5651-46180 | PIN, GAUGE | 4 | - | | <=40724 | | 0.15 |
| 070 | K5651-46182 | PIN, GAUGE | 4 | - | >> | >=40725 | | 0.15 |
| 070 | K5651-46183 | PIN(GAUGE) | 4 | - | >> | >=40737 | | 0.15 |
| 080 | 75599-53173 | PIN, COTTER(1/8*1) | 8 | - | | | 1/8*1 | 0.002 |
| 090 | K5651-46190 | PIN, ROLLER STAY | 2 | - | | <=40758 | | 0.125 |
| 090 | K5651-46192 | PIN, ROLLER STAY | 2 | - | >> | >=40759 | | 0.125 |
| 100 | K5651-42320 | SPRING(ROLLER STAY) | 2 | - | | <=41168 | | 0.009 |

S10501 ANTI-SCALP ROLLER ## RCK60P-F36EC
RCK60P-F36EC MOWER

Update Date: 2018/07/19

Printing Date: 2022/03/09

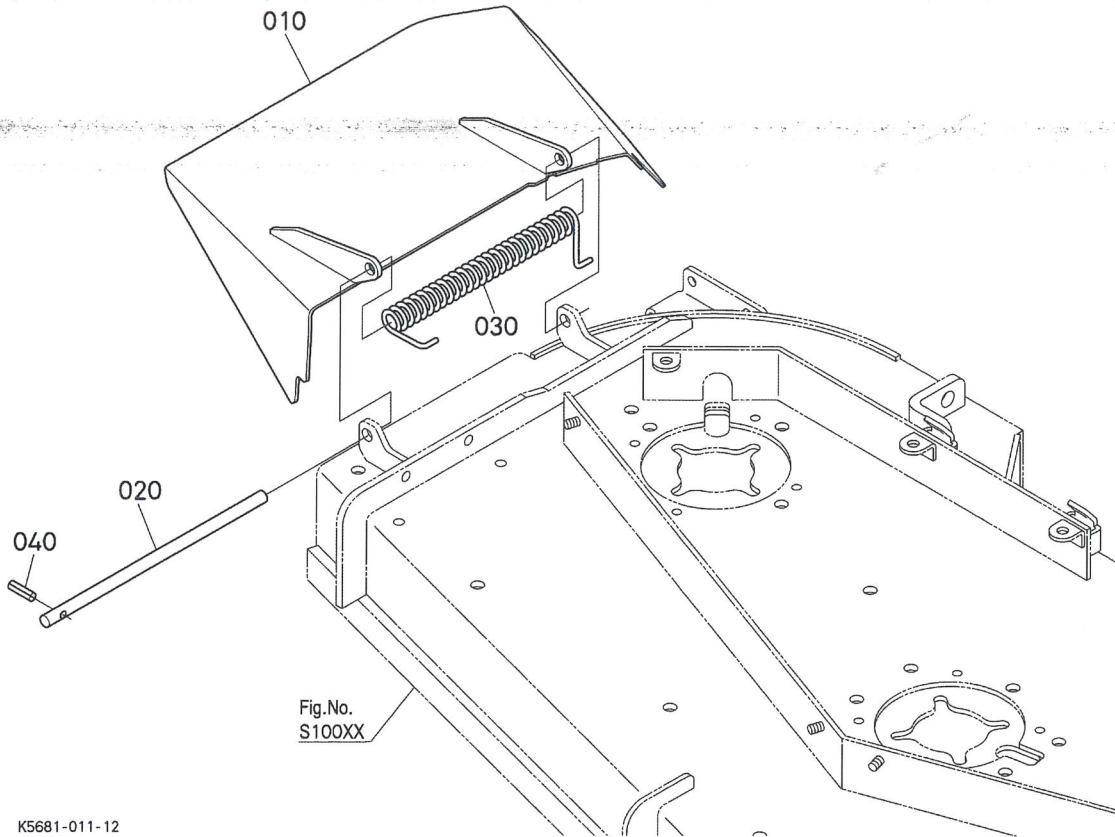
= Interchangeable

NI Not Interchangeable

>> New for Old

<< Old for New

| No. | Part No. | Part Name | Qty | FRT[h] | IC | Serial No./PIN | Remarks | Kg |
|-----|-------------|-----------------------|-----|--------|----|----------------|---------------------|-------|
| 100 | K5651-42322 | SPRING(ROLLER STAY) | 2 | - | >> | >=41169 | SPRING(ROLLER STAY) | 0.009 |
| 110 | 04011-50120 | WASHER,PLAIN | 2 | - | | | | 0.005 |
| 110 | K1022-50120 | WASHER(PLAIN) | 2 | - | = | | | 0.003 |
| 120 | 75599-52325 | PIN,SPRING(5/32*1.25) | 2 | - | | | 5/32*1.25 | 0.002 |
| 130 | K5681-46110 | BRACKET LH | 1 | - | | | | 0.0 |
| 140 | K5681-46120 | BRACKET RH | 1 | - | | | | 0.0 |
| 150 | 01073-51030 | BOLT | 4 | - | | | | 0.028 |
| 160 | 04512-50100 | WASHER,SPRING LOCK | 4 | - | | | | 0.003 |
| 170 | 02018-50100 | NUT | 4 | - | | | | 0.011 |
| 180 | K5651-46270 | ROLLER,ANTI-SCALP | 1 | - | | | | 0.63 |
| 190 | K5651-44170 | SHAFT | 1 | - | | <=40406 | | 0.5 |
| 190 | K5651-44173 | SHAFT,ANTISCALP | 1 | - | >> | >=40407 | | 0.5 |
| 200 | K1122-15150 | NIPPLE,GREASE | 1 | - | | <=40749 | M6*1.0 | 0.002 |
| 200 | K1122-15152 | NIPPLE(GREASE,M6*1.0) | 1 | - | >> | >=40750 | M6*1.0 | 0.002 |
| 210 | 75599-32018 | WASHER,PLAIN | 2 | - | | | | 0.017 |
| 220 | 02074-50120 | NUT | 1 | - | | | | 0.015 |
| 230 | 04512-50120 | WASHER,SPRING LOCK | 1 | - | | | | 0.003 |



≡ Interchangeable

NI Not Interchangeable

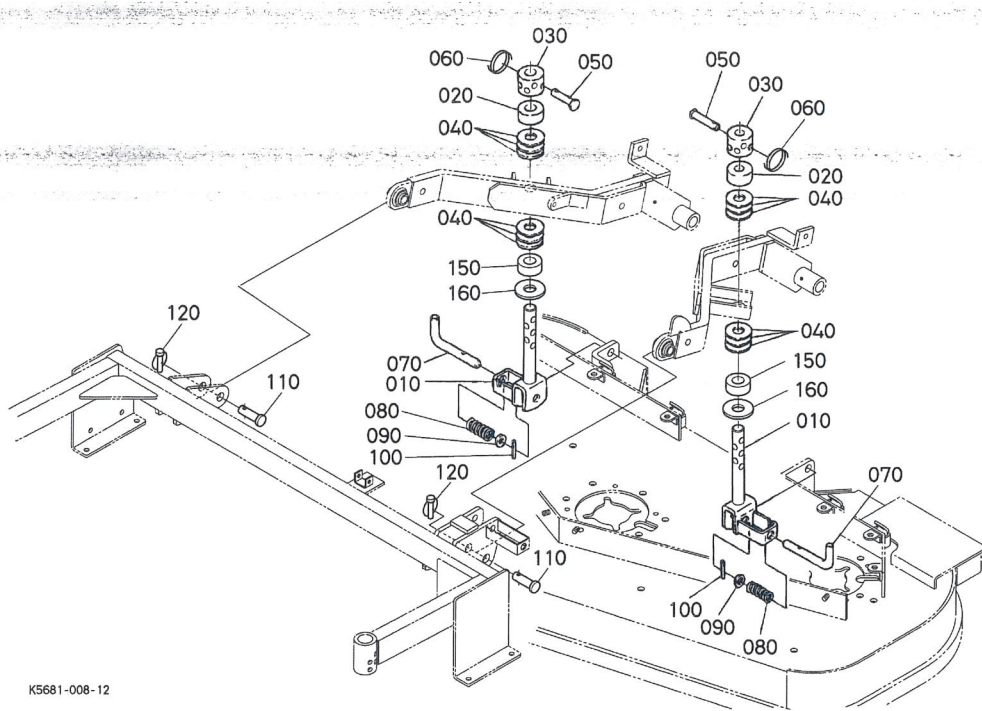
>> New for Old

<< Old for New

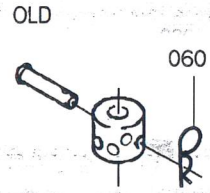
| No. | Part No. | Part Name | Qty | FRT[h] | IC | Serial No./PIN | Remarks | Kg |
|-----|-------------|-------------------|-----|--------|----|----------------|---------------------------------|-------|
| 010 | K5681-47112 | COVER,DISCHARGE | 1 | - | | <=10291 | ORDER BY REF.No.010 NEW PART | 0.0 |
| 010 | K5681-47113 | COVER,DISCHARGE | 1 | - | >> | >=10290 | | 0.0 |
| 020 | K5647-47150 | PIN,DISCHARGE | 1 | - | | <=40715 | | 0.031 |
| 020 | K5647-47152 | PIN DISCHARGE | 1 | - | >> | >=40716 | | 0.031 |
| 030 | K5647-47160 | SPRING(DISCHARGE) | 1 | - | | <=41432 | | 0.33 |
| 030 | K5647-47162 | SPRING(DISCHARGE) | 1 | - | >> | >=41433 | | 0.33 |
| 040 | 75599-52525 | PIN,SPRING | 1 | - | | | | 0.004 |

S20001 MOWER LINKAGE ## RCK60P-F36EC
RCK60P-F36EC MOWER

Update Date: 2018/07/19
Printing Date: 2022/03/09



K5681-008-12



K5681-801-11

≡ Interchangeable

NI Not Interchangeable

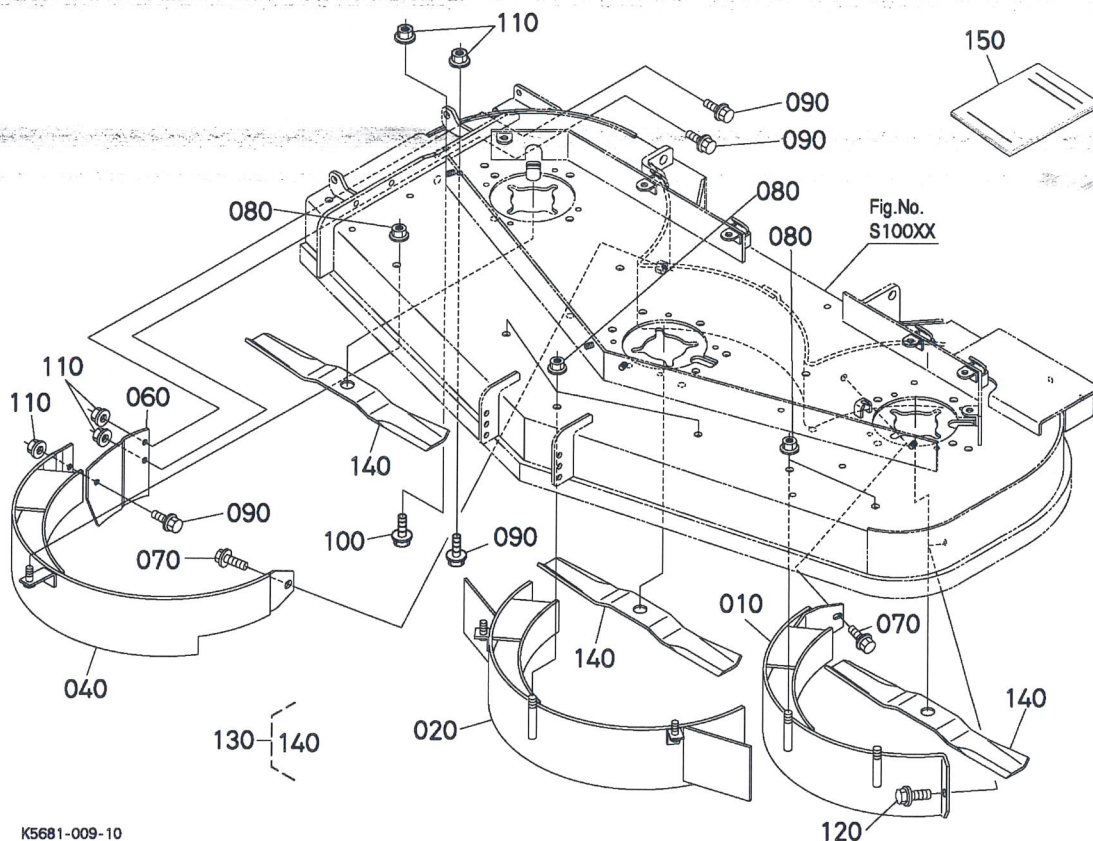
>> New for Old

<< Old for New

| No. | Part No. | Part Name | Qty | FRT[h] | IC | Serial No./PIN | Remarks | Kg |
|-----|-------------|------------------------|-----|--------|----|----------------|---------|-------|
| 010 | K5681-51170 | ROD REAR | 2 | - | | <=10735 | | 0.0 |
| 010 | K5681-51172 | ROD REAR | 2 | - | >> | >=10734 | | 0.0 |
| 020 | K5651-51190 | CUSHION | 2 | - | | | | 0.039 |
| 030 | K5681-51210 | COLLAR,ROD | 2 | - | | | | 0.0 |
| 040 | K5651-21670 | SPACER | 12 | - | | | | 0.025 |
| 050 | 75599-51345 | PIN,CLEVIS(3/8*2.25) | 2 | - | | | | 0.05 |
| 060 | 75599-56004 | PIN,SNAP | 2 | - | | <=10007 | | 0.01 |
| 060 | K5112-72730 | CIRCLIP | 2 | - | NI | >=10008 | | 0.01 |
| 060 | K5142-72730 | RING,SNAP | 2 | - | NI | >=10736 | | 0.003 |
| 060 | K5142-72732 | RING(SNAP,2) | 2 | - | >> | >=41195 | | 0.003 |
| 070 | K5651-44650 | PIN(REAR) | 2 | - | | <=40749 | | 0.2 |
| 070 | K5651-44652 | PIN,REAR | 2 | - | >> | >=40750 | | 0.2 |
| 080 | K5651-44670 | SPRING,PIN | 2 | - | | <=41168 | | 0.21 |
| 080 | K5651-44672 | SPRING(PIN) | 2 | - | >> | >=41169 | | 0.21 |
| 090 | 75599-32016 | WASHER,PLAIN(9/16) | 2 | - | | | | 0.009 |
| 100 | 75599-52532 | PIN,SPRING(7/32*1-5/8) | 2 | - | | | | 0.005 |

≡ Interchangeable NI Not Interchangeable >> New for Old << Old for New

| No. | Part No. | Part Name | Qty | FRT[h] | IC | Serial No./PIN | Remarks | Kg |
|-----|-------------|----------------|-----|--------|----|----------------|---------|------|
| 110 | K5651-71360 | PIN,CLEVIS | 2 | - | | <=40736 | | 0.21 |
| 110 | K5651-71362 | PIN,JOINT | 2 | - | >> | >=40737 | | 0.21 |
| 120 | K5651-37640 | PIN,SET | 2 | - | | | | 0.05 |
| 150 | K5651-51200 | CUSHION, UNDER | 2 | - | | | | 0.0 |
| 160 | K5651-27350 | WASHER,PLAIN | 2 | - | | <=41190 | | 0.0 |
| 160 | K5651-27352 | WASHER(PLAIN) | 2 | - | >> | >=41191 | | 0.0 |



≡ Interchangeable NI Not Interchangeable >> New for Old << Old for New

| No. | Part No. | Part Name | Qty | FRT[h] | IC | Serial No./PIN | Remarks | Kg |
|-----|-------------|-------------------|-----|--------|----|----------------|---------|-------|
| 010 | K5644-92110 | PLATE,MULCH LH | 1 | - | | | | 0.0 |
| 020 | K5644-92130 | PLATE,MULCH C | 1 | - | | | | 0.0 |
| 040 | K5644-92150 | PLATE,MULCH RH | 1 | - | | | | 0.0 |
| 060 | K5681-92160 | PLATE,SIDE 2 | 1 | - | | | | 0.0 |
| 070 | 01123-50818 | BOLT,SEMS | 2 | - | | | | 0.012 |
| 080 | 02131-50100 | NUT | 6 | - | | | | 0.01 |
| 090 | 01754-50820 | BOLT,FLANGE | 4 | - | | | | 0.015 |
| 100 | 01754-50816 | BOLT,FLANGE | 1 | - | | | | 0.011 |
| 110 | 02121-50080 | NUT | 5 | - | | | | 0.01 |
| 120 | 01774-51020 | BOLT,FLANGE | 1 | - | | | | 0.02 |
| 130 | K5781-97520 | KIT,BLADE 60C-H20 | 1 | - | | | | 0.0 |
| 140 | K5651-34340 | BLADE,H20 | 3 | - | | | | 1.55 |

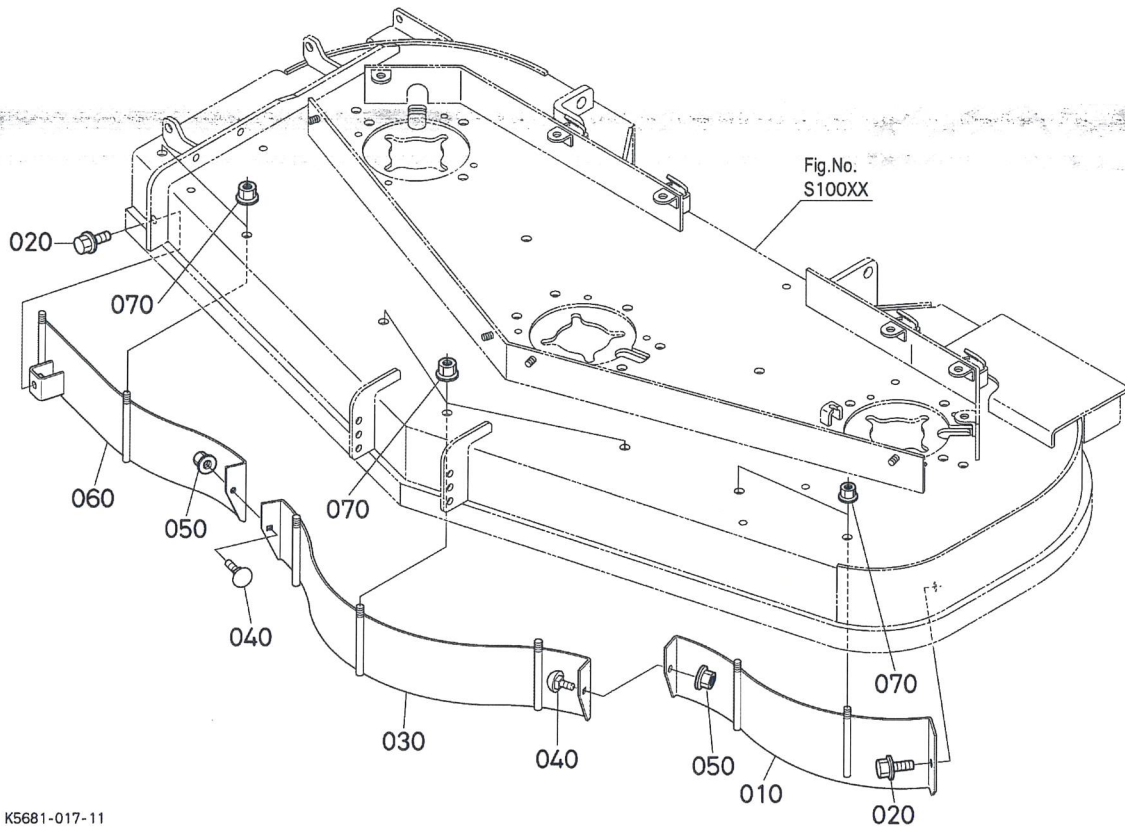
≡ Interchangeable

NI Not Interchangeable

➤ New for Old

◀ Old for New

| No. | Part No. | Part Name | Qty | FRT[h] | IC | Serial No./PIN | Remarks | Kg |
|-----|-------------|----------------------|-----|--------|----|-----------------|----------------------|-----|
| 150 | K5644-92090 | OPERATOR'S,MANUAL CA | 1 | - | | 150 K5644-92090 | OPERATOR'S MANUAL CA | 0.0 |



K5681-017-11

≡ Interchangeable

NI Not Interchangeable

>> New for Old

<< Old for New

| No. | Part No. | Part Name | Qty | FRT[h] | IC | Serial No./PIN | Remarks | Kg |
|-----|-------------|-------------------------------|-----|--------|----|----------------|---------|------|
| 010 | K5647-43210 | PLATE,FRONT LH | 1 | - | | | | 1.6 |
| 020 | 01774-51020 | BOLT,FLANGE | 2 | - | | | | 0.02 |
| 030 | K5647-43220 | PLATE,FRONT C | 1 | - | | | | 2.22 |
| 040 | K1122-91320 | BOLT,SHORT SQU. NECK(M8*1.25) | 2 | - | | | | 0.01 |
| 050 | 02121-50080 | NUT | 2 | - | | | | 0.01 |
| 060 | K5647-43230 | PLATE,FRONT RH | 1 | - | | | | 1.7 |
| 070 | 02131-50100 | NUT | 7 | - | | | | 0.01 |